

# Clarksville-Montgomery County Growth Plan Map

**Urban Growth Boundary:** This boundary encompasses the existing municipality and contiguous territory where higher-density residential, commercial, and industrial growth is expected to take place. This area is further defined as to its capability to provide urban services in an orderly and timely fashion to facilitate higher density land use patterns. By allowing high densities, it is anticipated that the land will be utilized to a fuller degree of potential giving support to the community's needs for future expansion.

**Planned Growth Areas:** This is the territory outside the municipality and the Urban Growth Boundary where low to moderate density residential, commercial, and industrial growth is projected within the planning period.

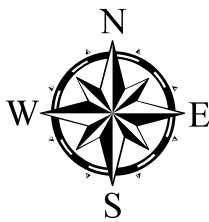
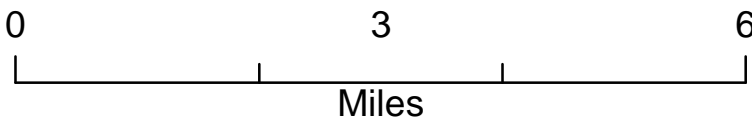
**Rural Areas:** This territory is the remainder of the county that was not included in a UGB or PGA. Based on growth expectations, it does not exhibit the need for higher density development patterns within the planning period delineated by this report. This area's development will be governed by the land use control ordinances established and maintained by the county. Any changes in density of development will require correlation with the provisions of the plan.

## Legend

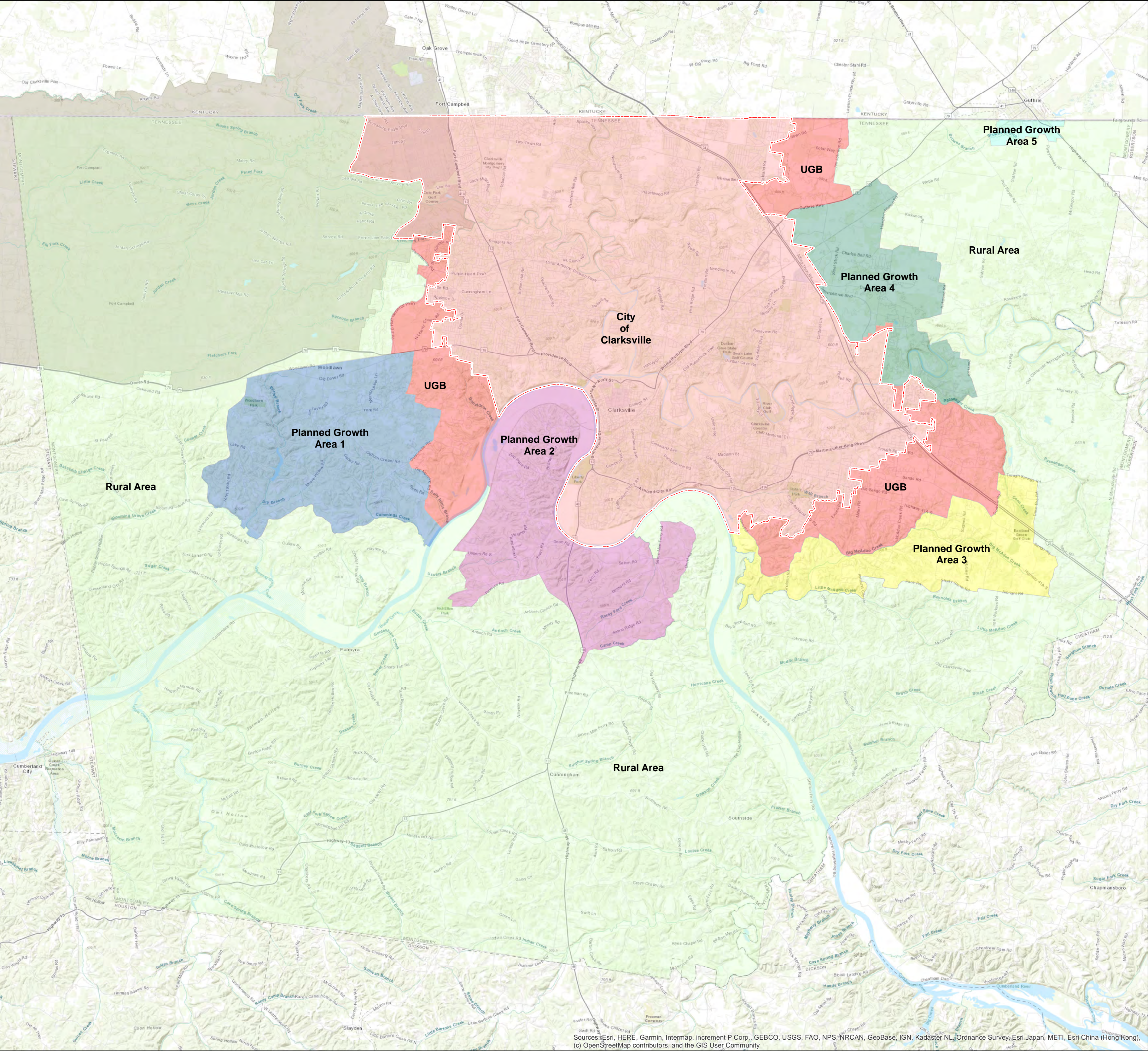
 Clarksville

## Growth Plan

-  City of Clarksville
-  Urban Growth Boundary
-  Planned Growth Area 1
-  Planned Growth Area 2
-  Planned Growth Area 3
-  Planned Growth Area 4
-  Planned Growth Area 5
-  Rural Area



Map Date: September1, 2019



Sources: Esri, HERE, Garmin, Intermap, increment P Corp., GEBCO, USGS, FAO, NPS, NRCAN, GeoBase, IGN, Kadaster NL, Ordnance Survey, Esri Japan, METI, Esri China (Hong Kong), (c) OpenStreetMap contributors, and the GIS User Community