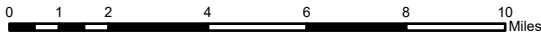
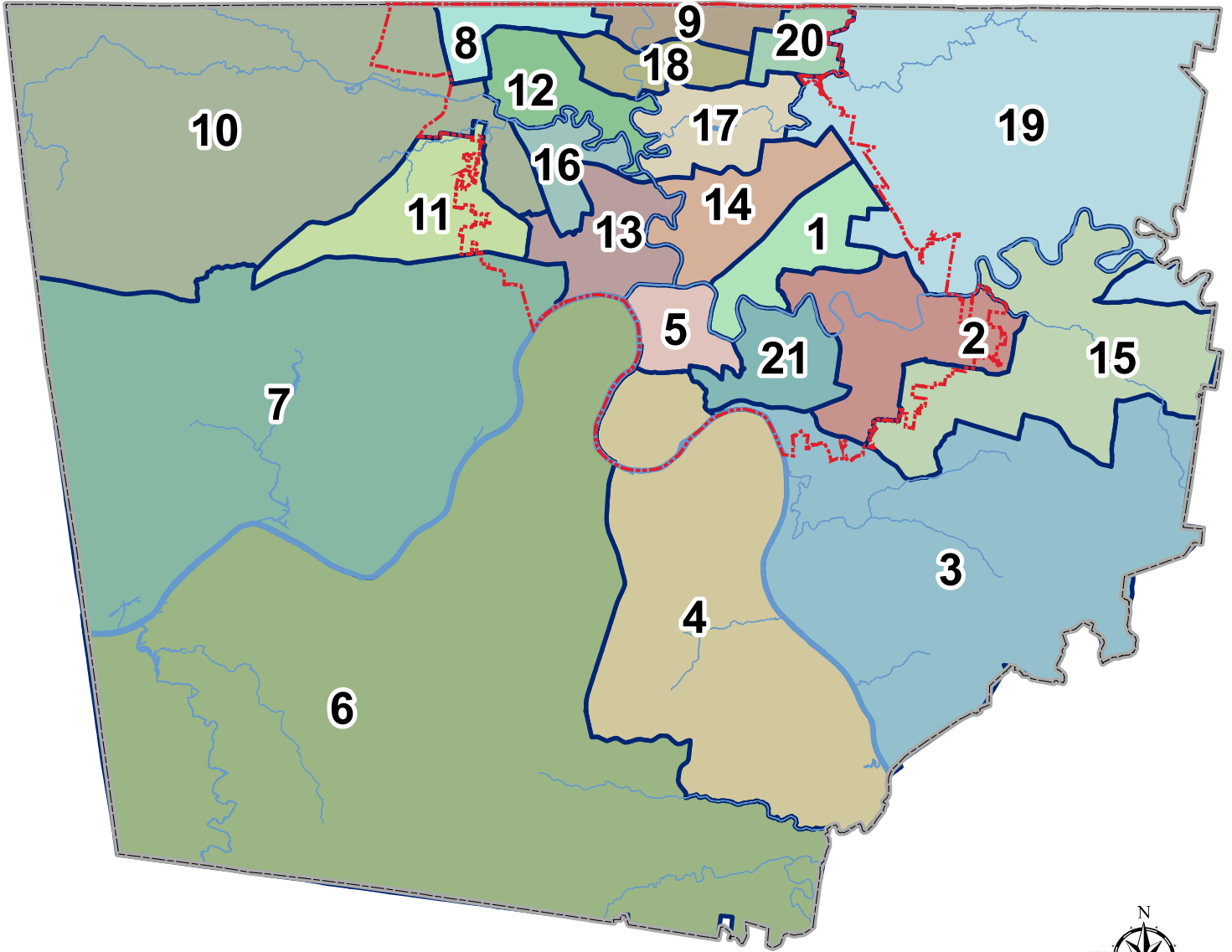


Montgomery County Commission Districts



- | | | | | | |
|-------------------------|-----------------------|-------------------------|---------------------|--------------------|-------------|
| 1 - John M. Gannon | 6 - Clayton Rudder | 11 - Joe Creek | 16 - Lisa Prichard | 21 - David Shelton | Interstate |
| 2 - Jason Knight | 7 - Nathan Burkholder | 12 - Carmelle Chandler | 17 - Chris Rasnic | U. S. Hwy | State Hwy |
| 3 - Joe Smith | 8 - Tangi C. Smith | 13 - Walker R. Woodruff | 18 - Ryan Gallant | Rivers | Clarksville |
| 4 - Rickey Ray | 9 - Jorge Padro | 14 - Joshua Beal | 19 - Billy Frye | | |
| 5 - Rashida A. Leverett | 10 - Jeremiah Walker | 15 - David Harper | 20 - Autumn Simmons | | |

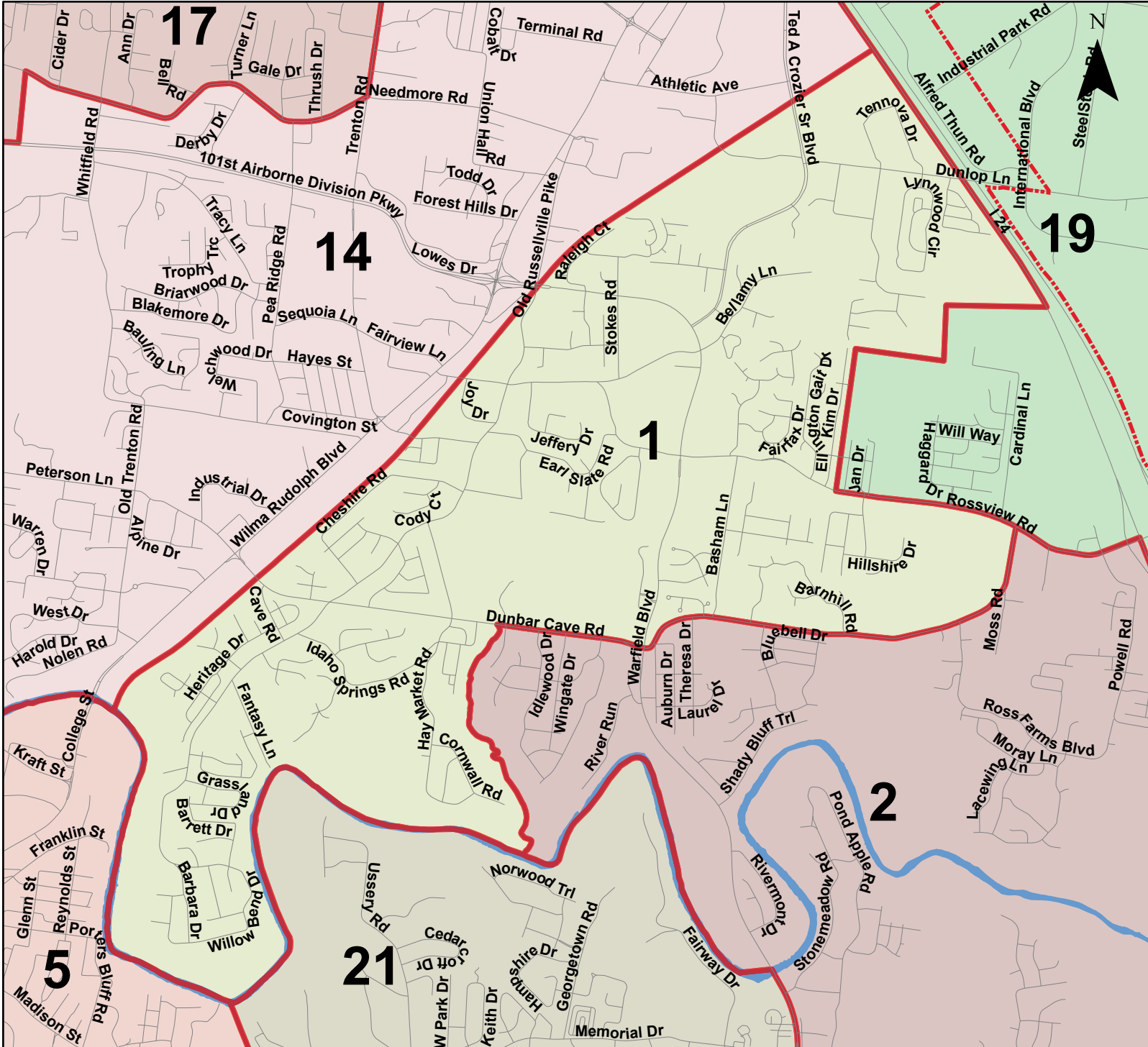
<https://mcgtn.org/commission>

Updated March 27, 2026

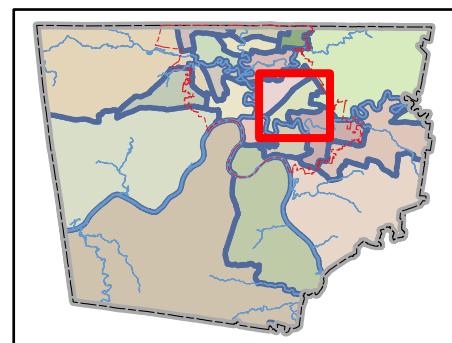
Montgomery County Commission Districts

District 1

Commissioner John M. Gannon



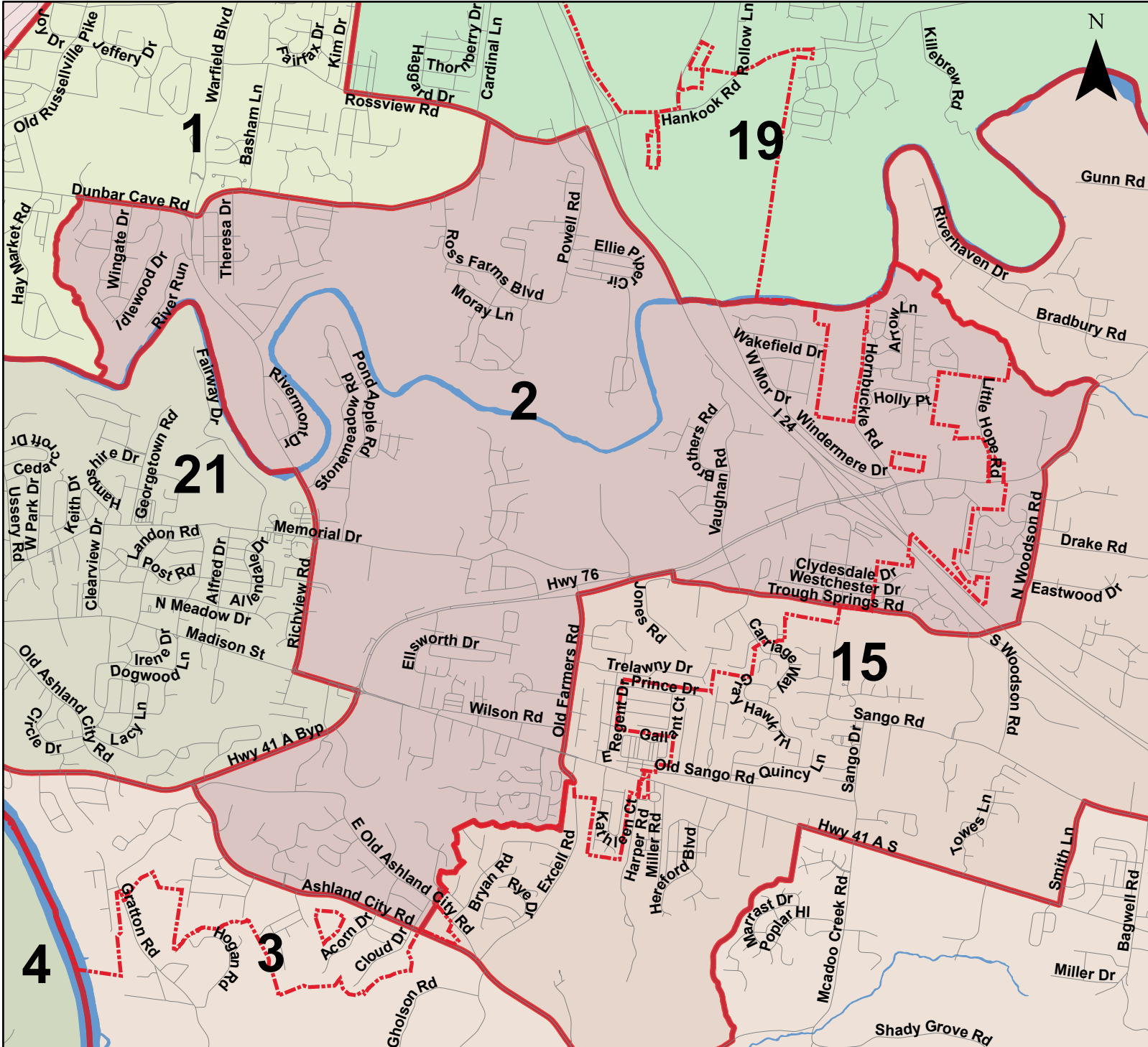
- | | | | | |
|--------------------|-------------------------|-------------------------|----------------------|---------------------|
| Clarksville | Interstate | 4 - Rickey Ray | 10 - Jeremiah Walker | 16 - Lisa Prichard |
| Highway | 5 - Rashida A. Leverett | 11 - Joe Creek | 17 - Chris Ransic | 18 - Ryan Gallant |
| Rivers | 6 - Clayton Rudder | 12 - Carmelle Chandler | 19 - Billy Frye | 20 - Autumn Simmons |
| 1 - John M. Gannon | 7 - Nathan Burkholder | 13 - Walker R. Woodruff | 21 - David Shelton | |
| 2 - Jason Knight | 8 - Tangi C. Smith | 14 - Joshua Beal | | |
| 3 - Joe Smith | 9 - Jorge Padro | 15 - David Harper | | |



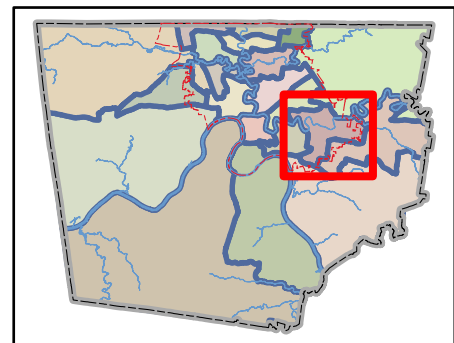
Montgomery County Commission Districts

District 2

Commissioner Jason Knight



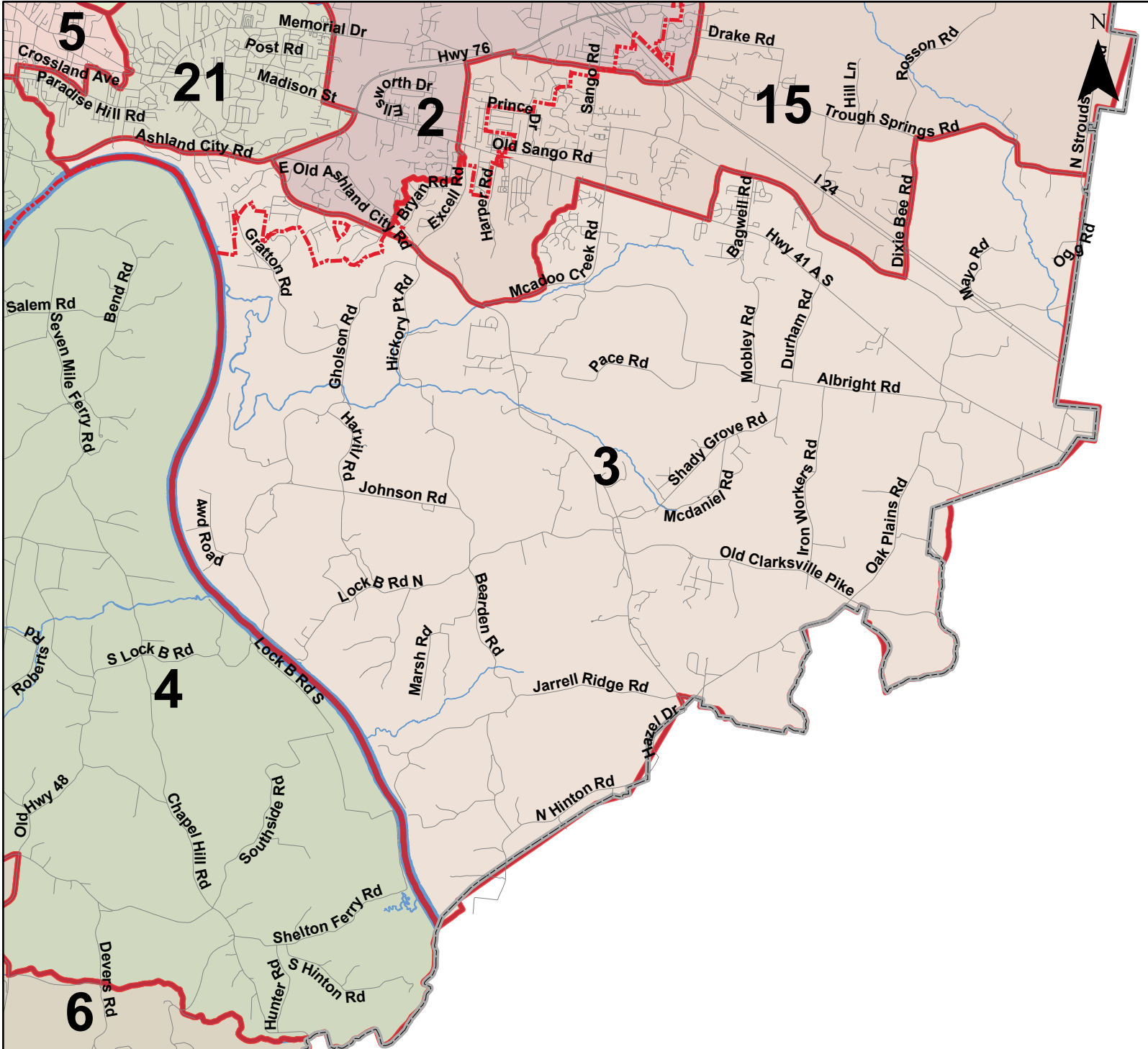
- | | | | | |
|--------------------|-------------------------|-------------------------|----------------------|---------------------|
| Clarksville | Interstate | 4 - Rickey Ray | 10 - Jeremiah Walker | 16 - Lisa Prichard |
| Highway | 5 - Rashida A. Leverett | 11 - Joe Creek | 17 - Chris Ransic | 18 - Ryan Gallant |
| Rivers | 6 - Clayton Rudder | 12 - Carmelle Chandler | 19 - Billy Frye | 20 - Autumn Simmons |
| 1 - John M. Gannon | 7 - Nathan Burkholder | 13 - Walker R. Woodruff | 21 - David Shelton | |
| 2 - Jason Knight | 8 - Tangi C. Smith | 14 - Joshua Beal | | |
| 3 - Joe Smith | 9 - Jorge Padro | 15 - David Harper | | |



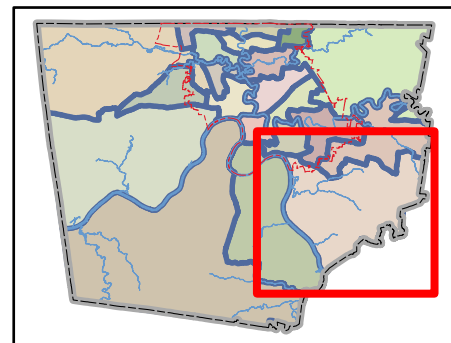
Montgomery County Commission Districts

District 3

Commissioner Joe Smith



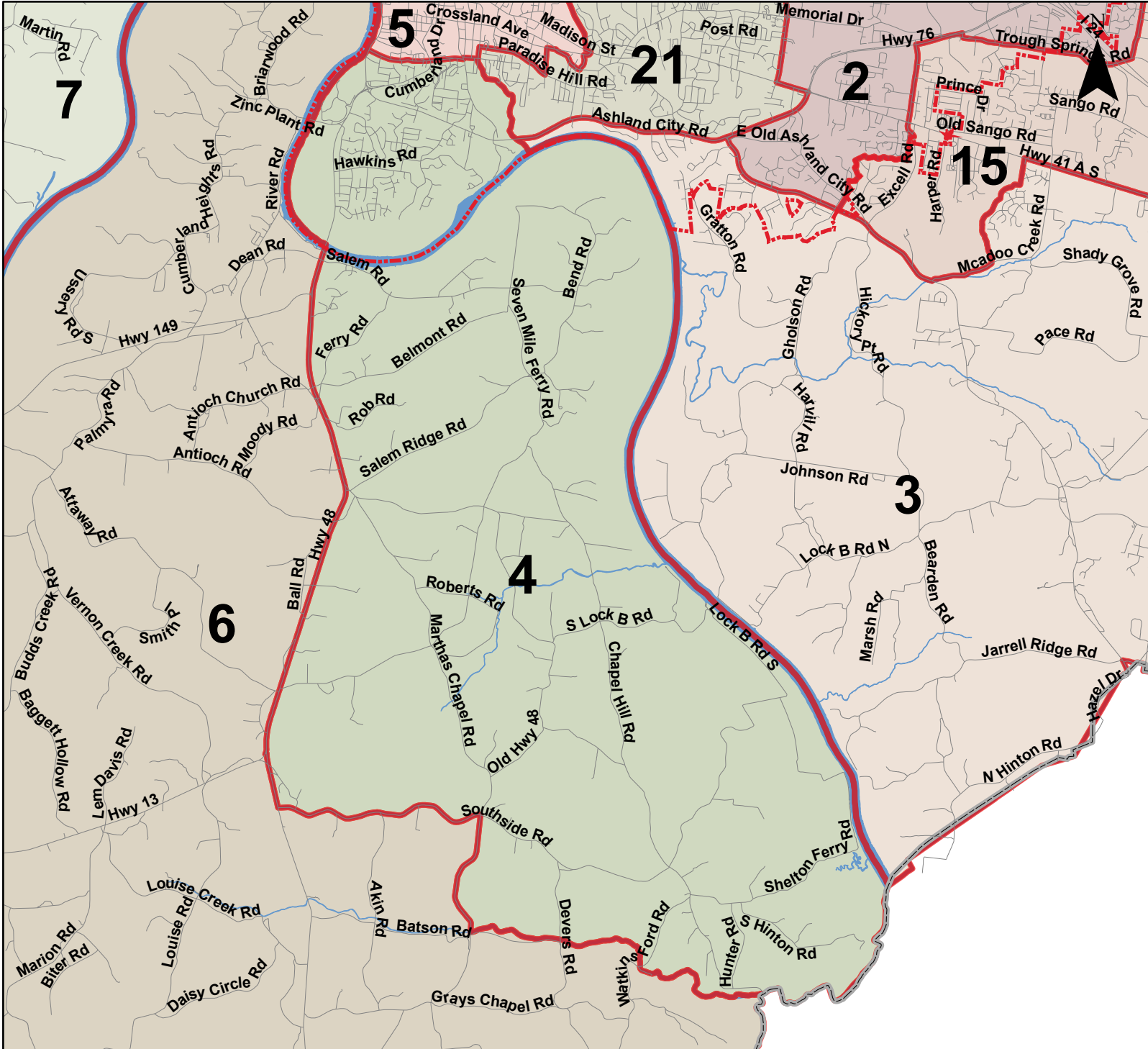
- | | | | | |
|--------------------|-------------------------|-------------------------|----------------------|---------------------|
| Clarksville | Interstate | 4 - Rickey Ray | 10 - Jeremiah Walker | 16 - Lisa Prichard |
| Highway | 5 - Rashida A. Leverett | 11 - Joe Creek | 17 - Chris Rasnic | 18 - Ryan Gallant |
| Rivers | 6 - Clayton Rudder | 12 - Carmelle Chandler | 19 - Billy Frye | 20 - Autumn Simmons |
| 1 - John M. Gannon | 7 - Nathan Burkholder | 13 - Walker R. Woodruff | 21 - David Shelton | |
| 2 - Jason Knight | 8 - Tangi C. Smith | 14 - Joshua Beal | | |
| 3 - Joe Smith | 9 - Jorge Padro | 15 - David Harper | | |



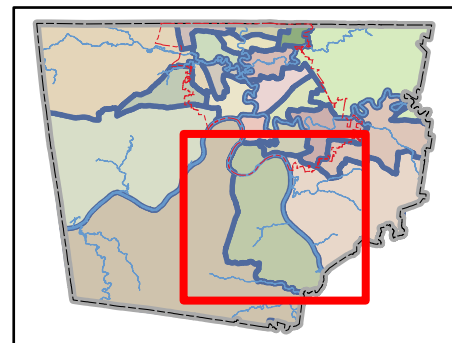
Montgomery County Commission Districts

District 4

Commissioner Rickey Ray



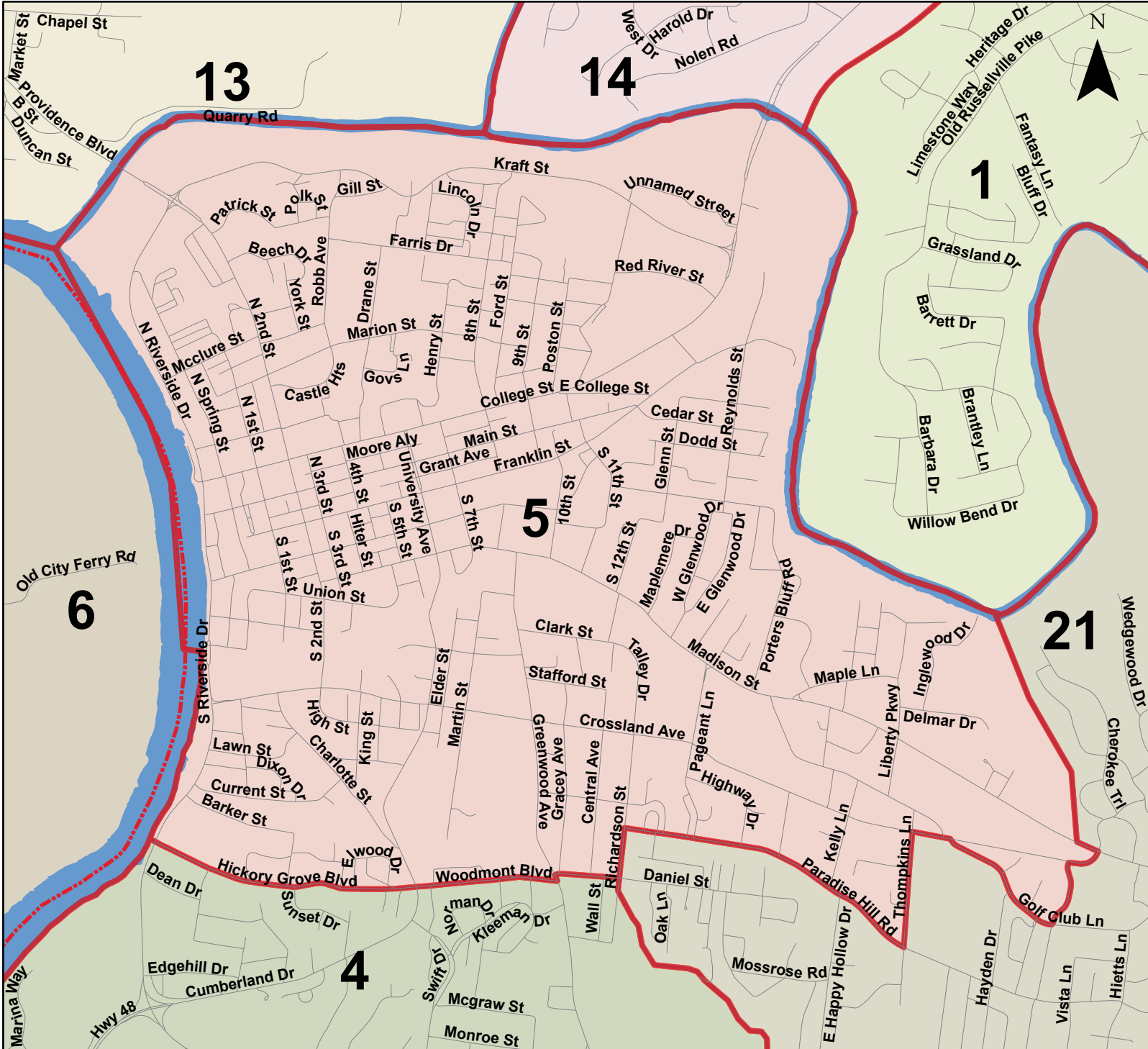
- | | | | | |
|--------------------|-----------------------|-------------------------|----------------------|--------------------|
| Clarksville | Interstate | 4 - Rickey Ray | 10 - Jeremiah Walker | 16 - Lisa Prichard |
| Highway | Rivers | 5 - Rashida A. Leverett | 11 - Joe Creek | 17 - Chris Ransic |
| 1 - John M. Gannon | 7 - Nathan Burkholder | 12 - Carmelle Chandler | 18 - Ryan Gallant | 19 - Billy Frye |
| 2 - Jason Knight | 8 - Tangi C. Smith | 13 - Walker R. Woodruff | 20 - Autumn Simmons | 21 - David Shelton |
| 3 - Joe Smith | 9 - Jorge Padro | 14 - Joshua Beal | | |
| | | 15 - David Harper | | |



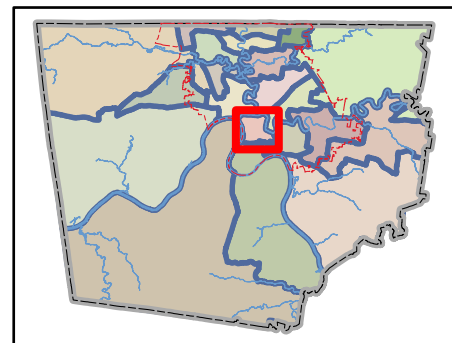
Montgomery County Commission Districts

District 5

Commissioner Rashida A. Leverett



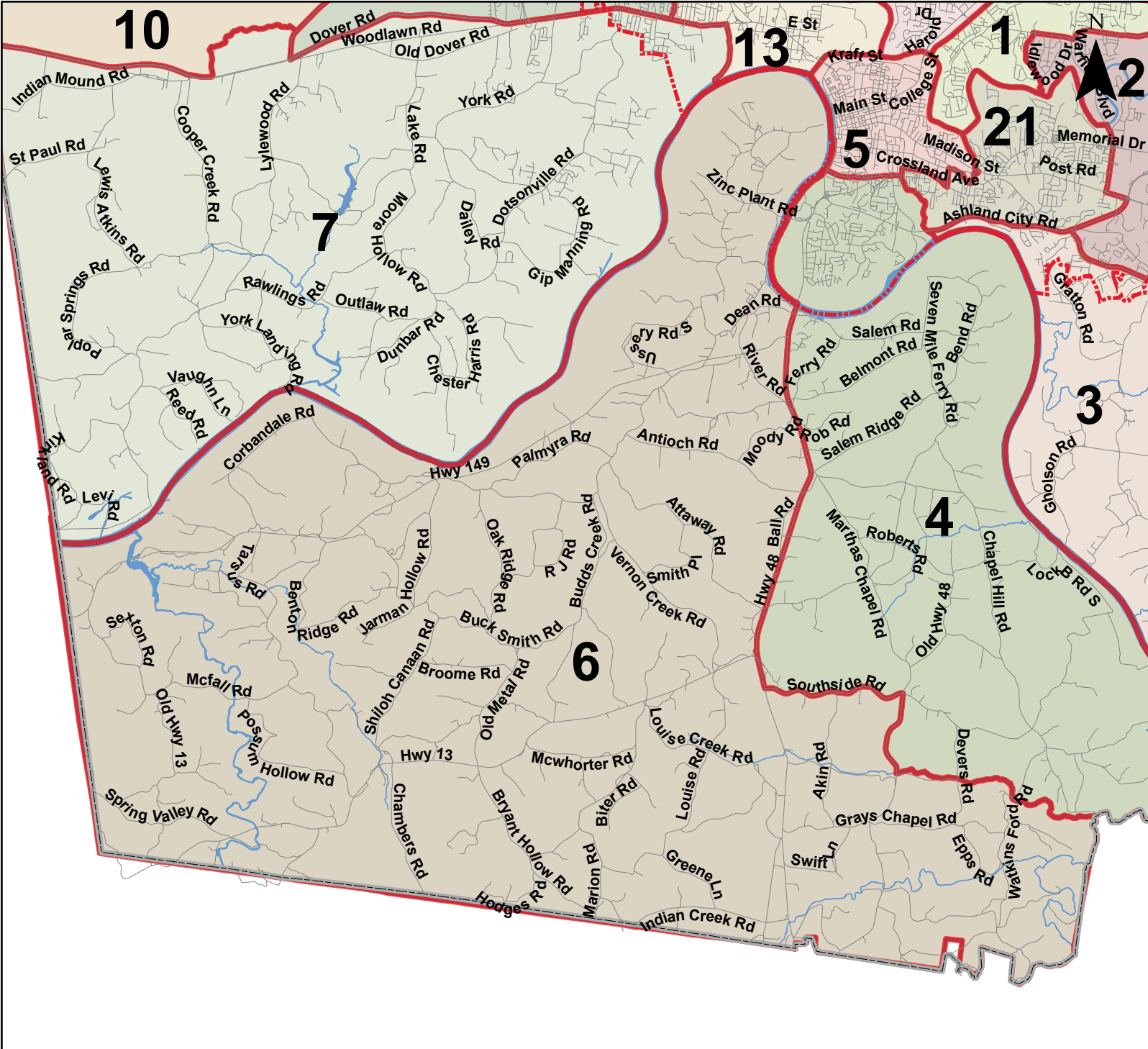
- | | | | | |
|--------------------|-------------------------|-------------------------|----------------------|---------------------|
| Clarksville | Interstate | 4 - Rickey Ray | 10 - Jeremiah Walker | 16 - Lisa Prichard |
| Highway | 5 - Rashida A. Leverett | 11 - Joe Creek | 17 - Chris Ransic | 18 - Ryan Gallant |
| Rivers | 6 - Clayton Rudder | 12 - Carmelle Chandler | 19 - Billy Frye | 20 - Autumn Simmons |
| 1 - John M. Gannon | 7 - Nathan Burkholder | 13 - Walker R. Woodruff | 19 - Billy Frye | 21 - David Shelton |
| 2 - Jason Knight | 8 - Tangi C. Smith | 14 - Joshua Beal | | |
| 3 - Joe Smith | 9 - Jorge Padro | 15 - David Harper | | |



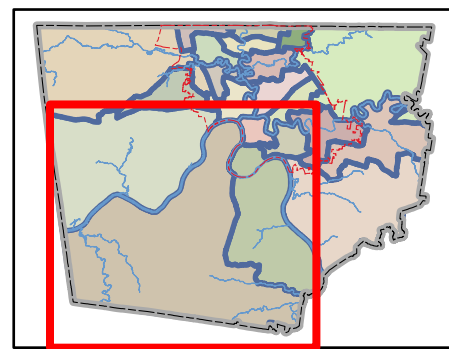
Montgomery County Commission Districts

District 6

Commissioner Clayton Rudder



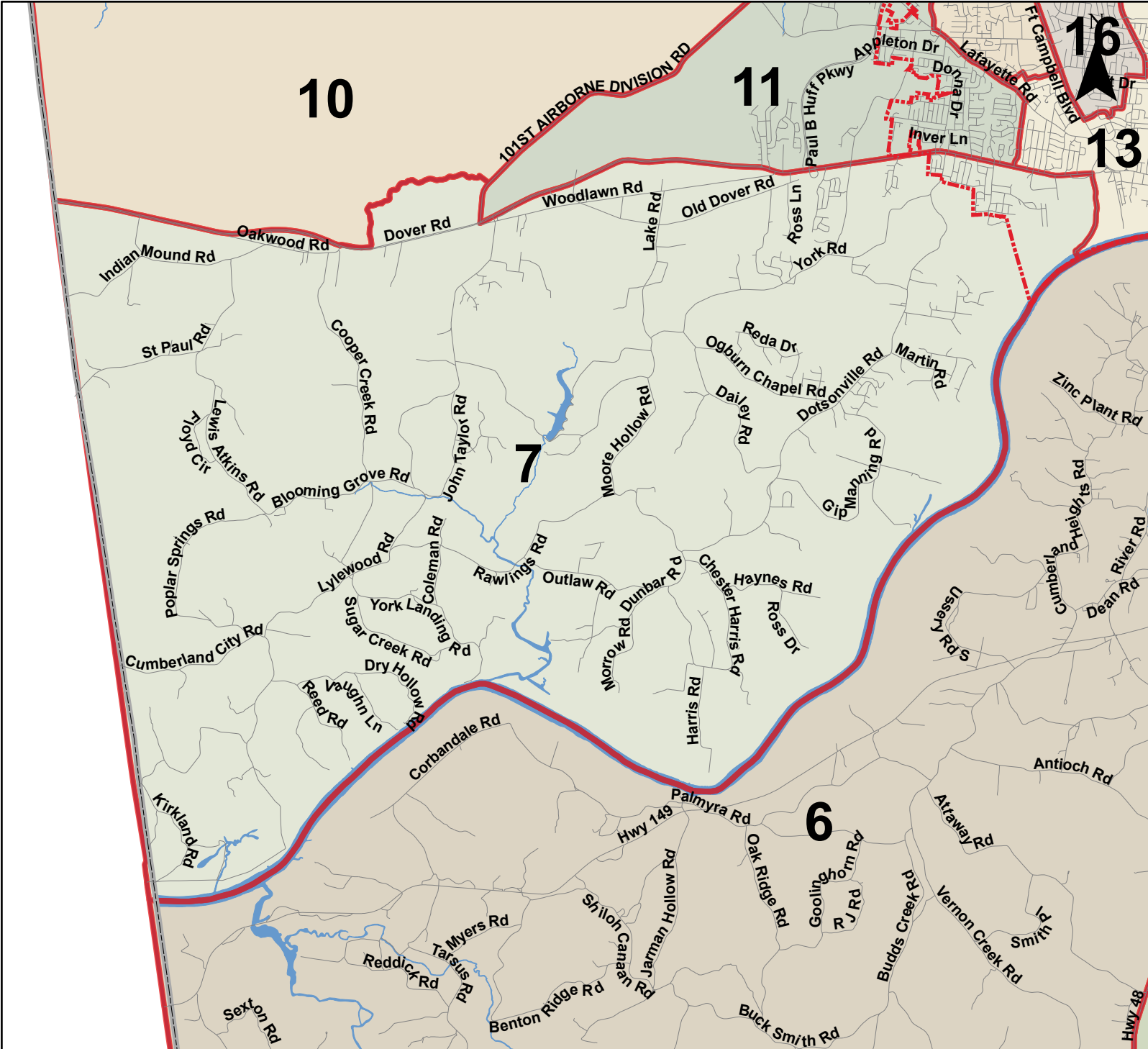
- | | | | | |
|--------------------|-----------------------|-------------------------|------------------------|--------------------|
| Clarksville | Interstate | 4 - Rickey Ray | 10 - Jeremiah Walker | 16 - Lisa Prichard |
| Highway | Rivers | 5 - Rashida A. Leverett | 11 - Joe Creek | 17 - Chris Ransic |
| 1 - John M. Gannon | 7 - Nathan Burkholder | 6 - Clayton Rudder | 12 - Carmelle Chandler | 18 - Ryan Gallant |
| 2 - Jason Knight | 8 - Tangi C. Smith | 13 - Walker R. Woodruff | 14 - Joshua Beal | 19 - Billy Frye |
| 3 - Joe Smith | 9 - Jorge Padro | 15 - David Harper | 20 - Autumn Simmons | 21 - David Shelton |



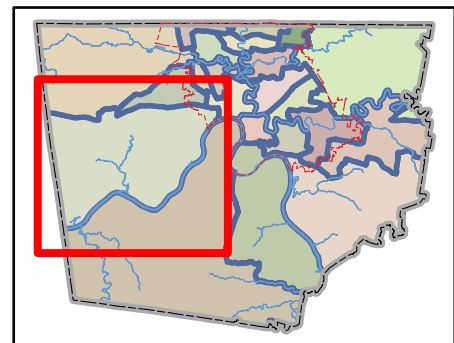
Montgomery County Commission Districts

District 7

Commissioner Nathan Burkholder



- | | | | | |
|--------------------|-------------------------|-------------------------|----------------------|---------------------|
| Clarksville | Interstate | 4 - Rickey Ray | 10 - Jeremiah Walker | 16 - Lisa Prichard |
| Highway | 5 - Rashida A. Leverett | 11 - Joe Creek | 17 - Chris Rasnic | 18 - Ryan Gallant |
| Rivers | 6 - Clayton Rudder | 12 - Carmelle Chandler | 19 - Billy Frye | 20 - Autumn Simmons |
| 1 - John M. Gannon | 7 - Nathan Burkholder | 13 - Walker R. Woodruff | 21 - David Shelton | |
| 2 - Jason Knight | 8 - Tangi C. Smith | 14 - Joshua Beal | | |
| 3 - Joe Smith | 9 - Jorge Padro | 15 - David Harper | | |

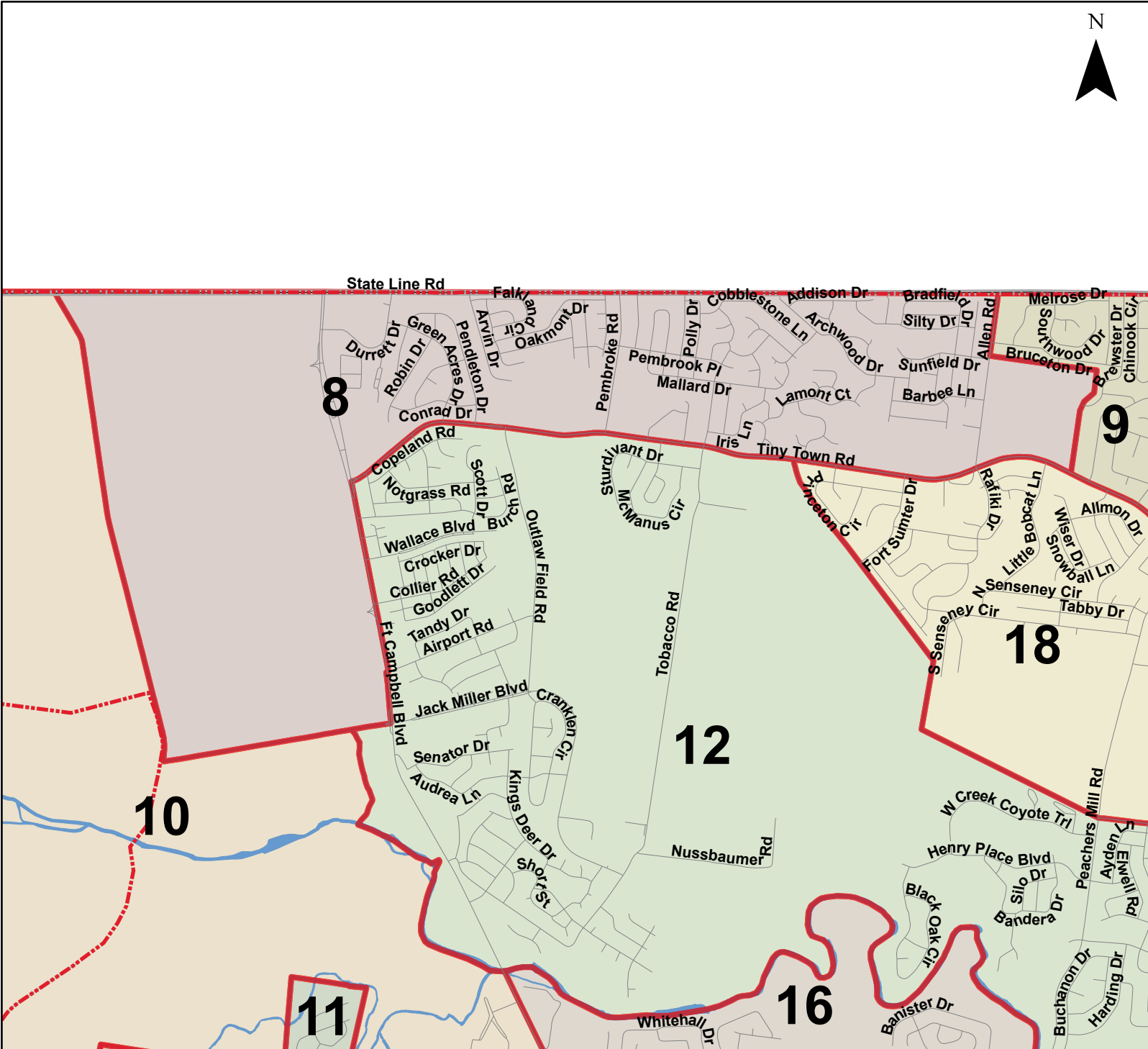


Montgomery County Commission Districts

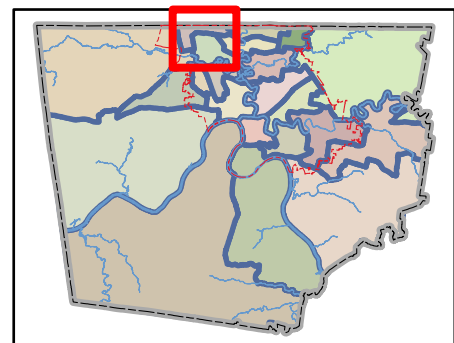
District 8

Commissioner LaTonia Brown

N



- | | | | | |
|--------------------|-----------------------|-------------------------|-------------------------|---------------------|
| Clarksville | Interstate | 4 - Rickey Ray | 10 - Jeremiah Walker | 16 - Lisa Prichard |
| Highway | Rivers | 5 - Rashida A. Leverett | 11 - Joe Creek | 17 - Chris Ransic |
| 1 - John M. Gannon | 2 - Jason Knight | 6 - Clayton Rudder | 12 - Carmelle Chandler | 18 - Ryan Gallant |
| 3 - Joe Smith | 7 - Nathan Burkholder | 8 - Tangi C. Smith | 13 - Walker R. Woodruff | 19 - Billy Frye |
| | 9 - Jorge Padro | 14 - Joshua Beal | 15 - David Harper | 20 - Autumn Simmons |
| | | | | 21 - David Shelton |

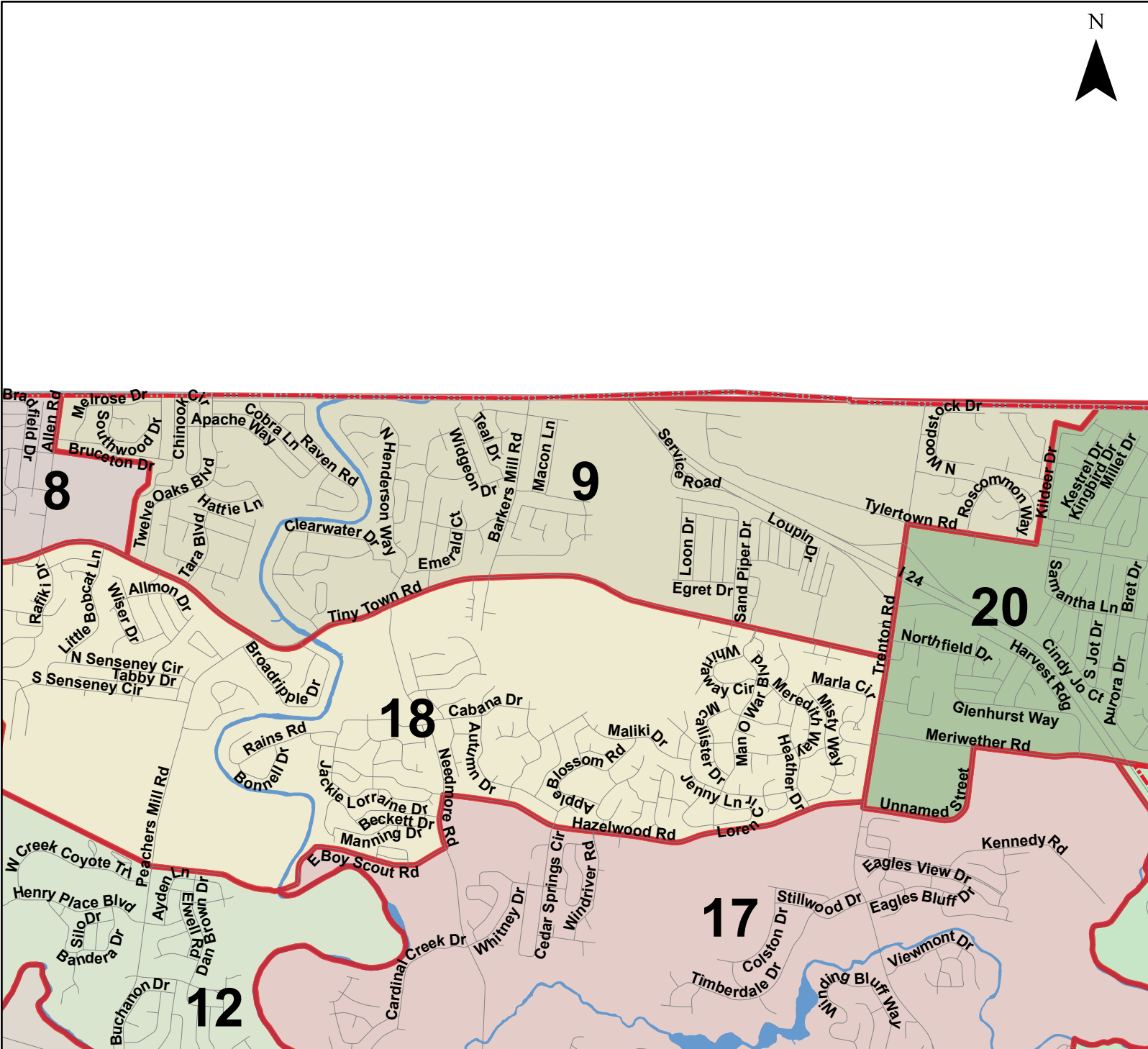


Montgomery County Commission Districts

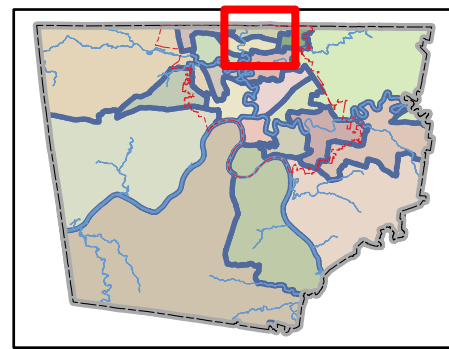
District 9

Commissioner Jorge Padro

N



- | | | | | |
|--------------------|-----------------------|-------------------------|-------------------------|---------------------|
| Clarksville | Interstate | 4 - Rickey Ray | 10 - Jeremiah Walker | 16 - Lisa Prichard |
| Highway | Rivers | 5 - Rashida A. Leverett | 11 - Joe Creek | 17 - Chris Rasnic |
| 1 - John M. Gannon | 2 - Jason Knight | 6 - Clayton Rudder | 12 - Carmelle Chandler | 18 - Ryan Gallant |
| 3 - Joe Smith | 7 - Nathan Burkholder | 8 - Tangi C. Smith | 13 - Walker R. Woodruff | 19 - Billy Frye |
| | 9 - Jorge Padro | 14 - Joshua Beal | 15 - David Harper | 20 - Autumn Simmons |
| | | | | 21 - David Shelton |

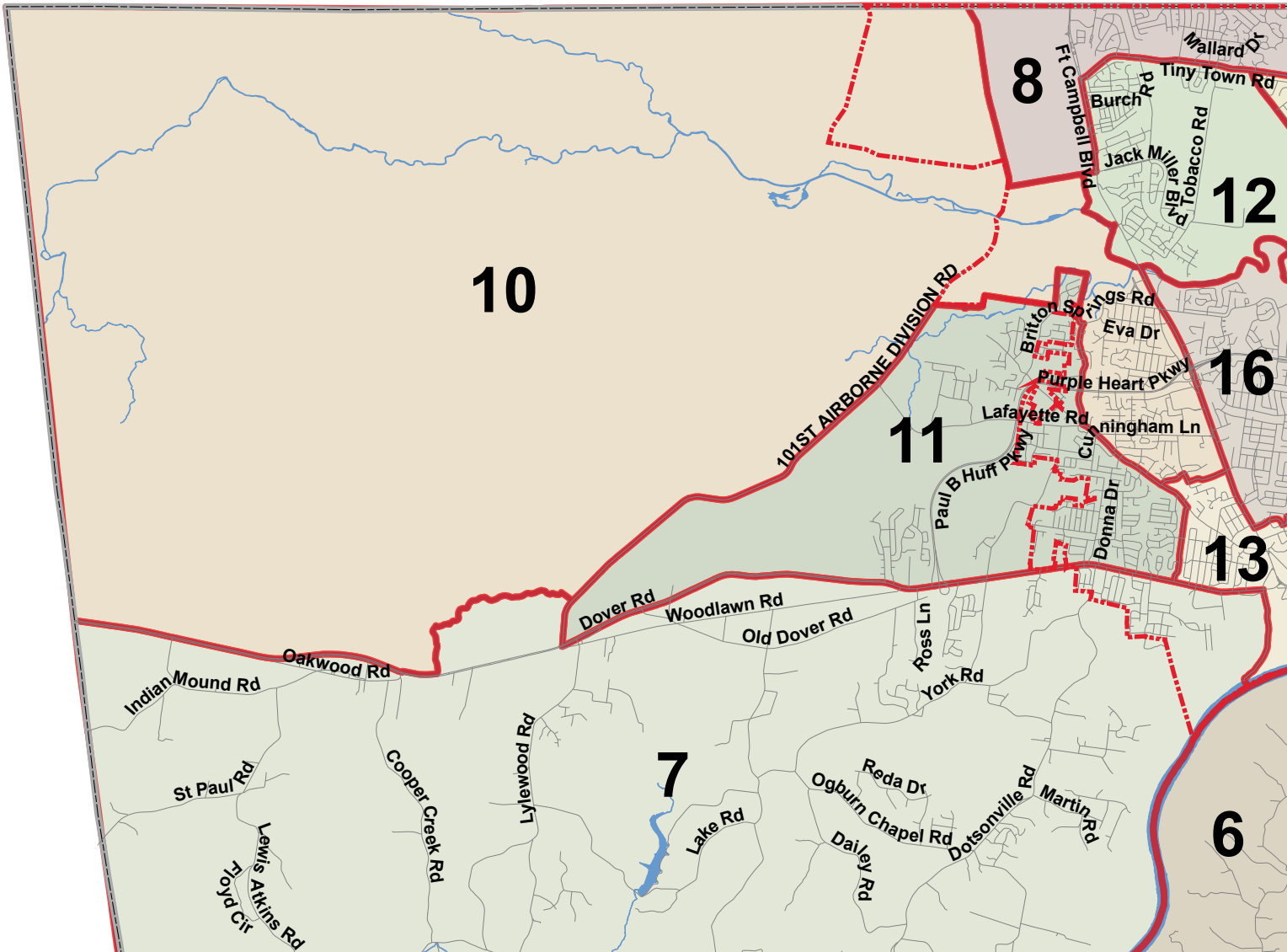


Montgomery County Commission Districts

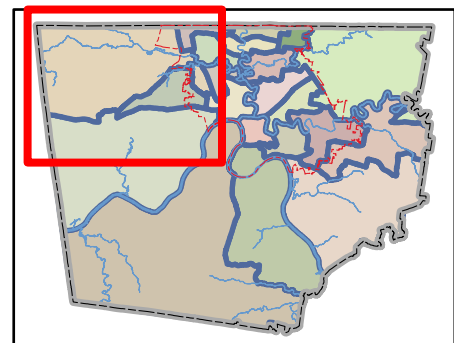
District 10

Commissioner Jeremiah Walker

N



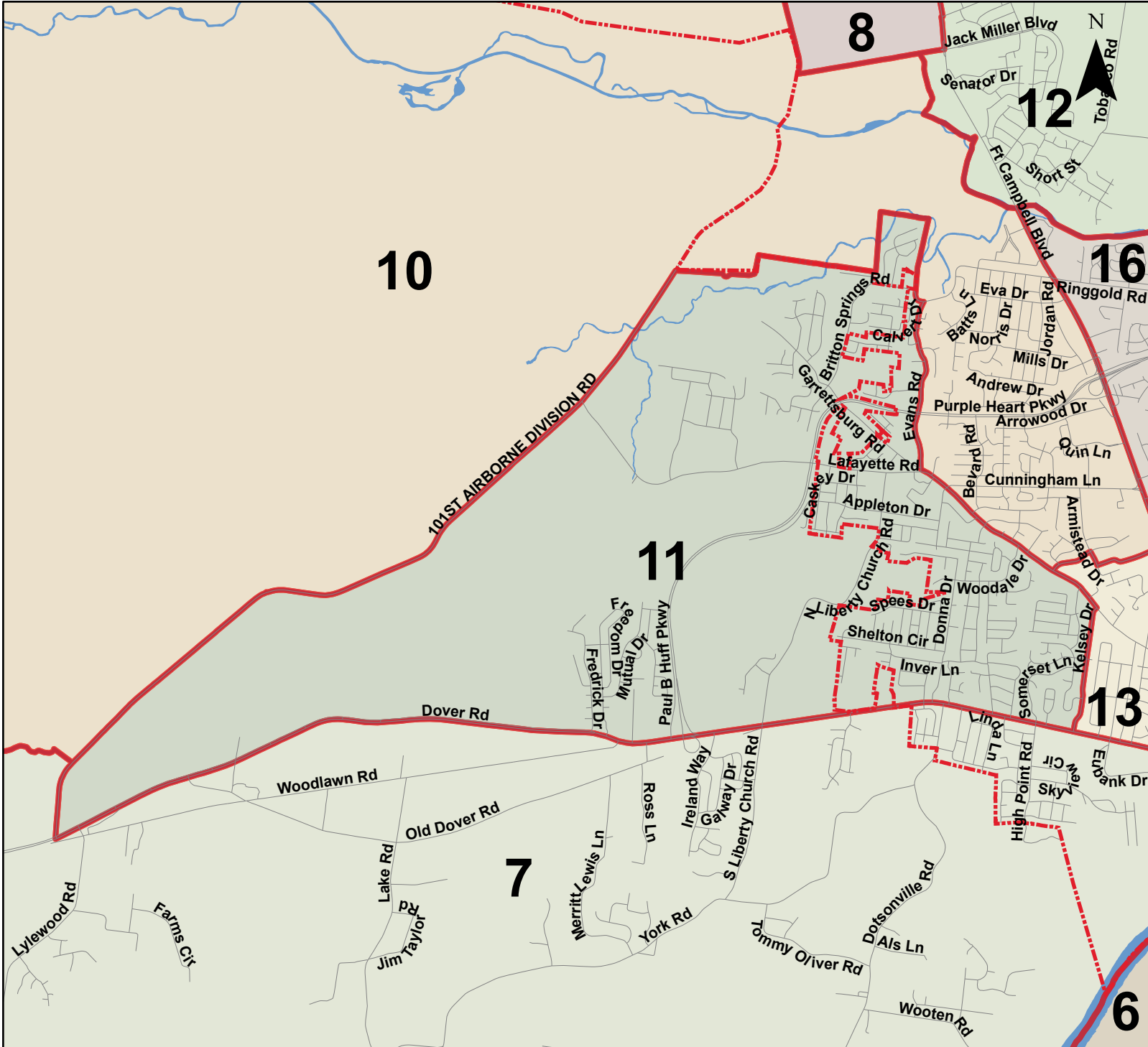
- | | | | | |
|--------------------|------------|-------------------------|-------------------------|---------------------|
| Clarksville | Interstate | 4 - Rickey Ray | 10 - Jeremiah Walker | 16 - Lisa Prichard |
| Highway | | 5 - Rashida A. Leverett | 11 - Joe Creek | 17 - Chris Rasnic |
| Rivers | | 6 - Clayton Rudder | 12 - Carmelle Chandler | 18 - Ryan Gallant |
| 1 - John M. Gannon | | 7 - Nathan Burkholder | 13 - Walker R. Woodruff | 19 - Billy Frye |
| 2 - Jason Knight | | 8 - Tangi C. Smith | 14 - Joshua Beal | 20 - Autumn Simmons |
| 3 - Joe Smith | | 9 - Jorge Padro | 15 - David Harper | 21 - David Shelton |



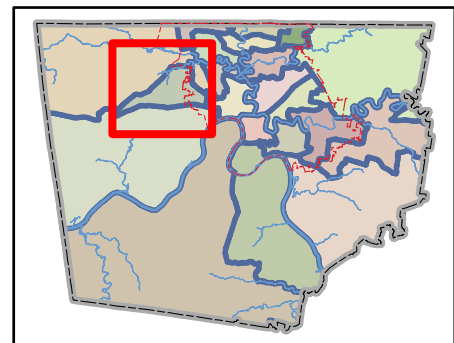
Montgomery County Commission Districts

District 11

Commissioner Joe Creek



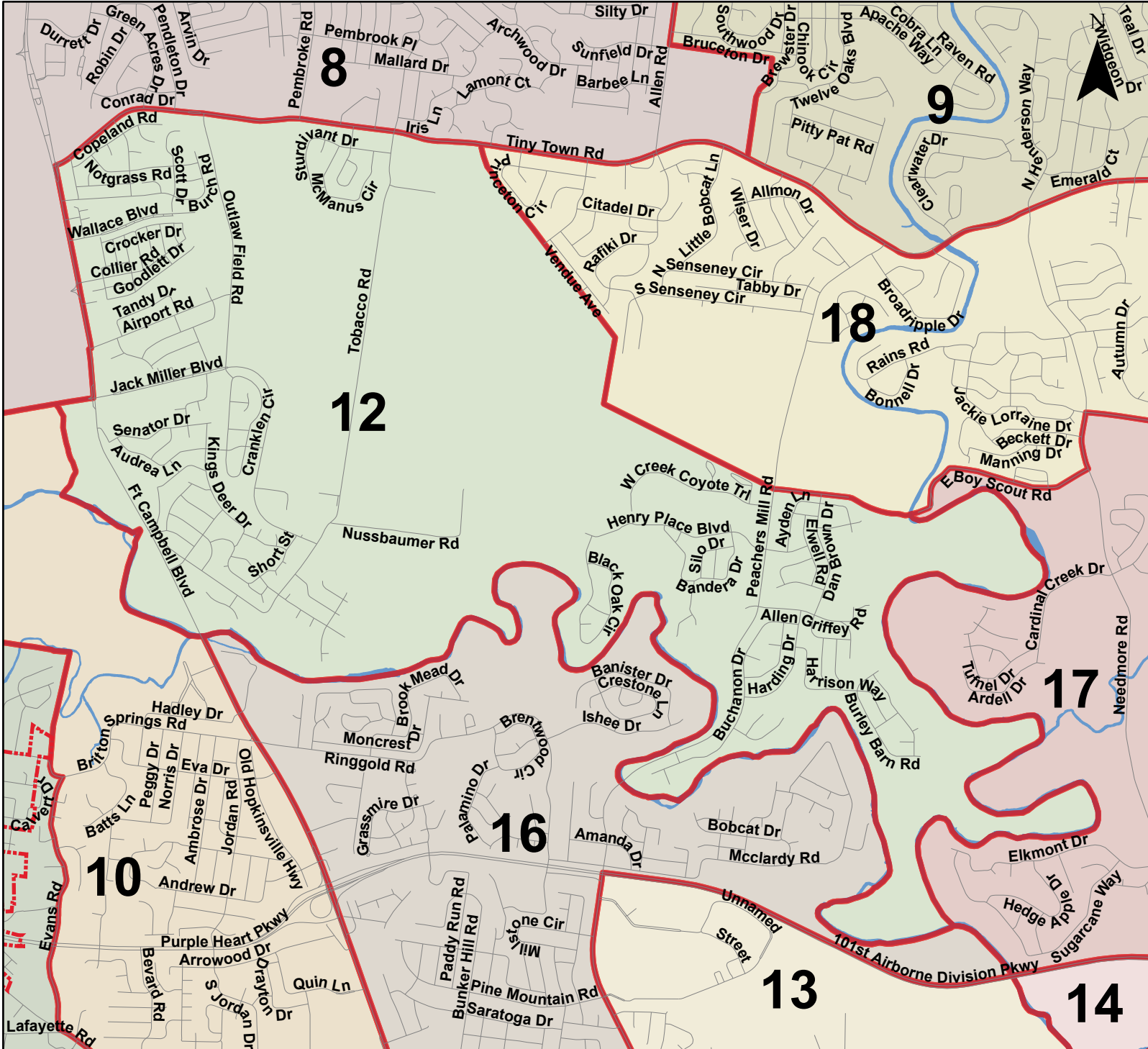
- | | | | | |
|--------------------|-----------------------|-------------------------|-------------------------|---------------------|
| Clarksville | Interstate | 4 - Rickey Ray | 10 - Jeremiah Walker | 16 - Lisa Prichard |
| Highway | Rivers | 5 - Rashida A. Leverett | 11 - Joe Creek | 17 - Chris Rasnic |
| 1 - John M. Gannon | 2 - Jason Knight | 6 - Clayton Rudder | 12 - Carmelle Chandler | 18 - Ryan Gallant |
| 3 - Joe Smith | 7 - Nathan Burkholder | 8 - Tangi C. Smith | 13 - Walker R. Woodruff | 19 - Billy Frye |
| | 9 - Jorge Padro | 14 - Joshua Beal | 15 - David Harper | 20 - Autumn Simmons |
| | | | | 21 - David Shelton |



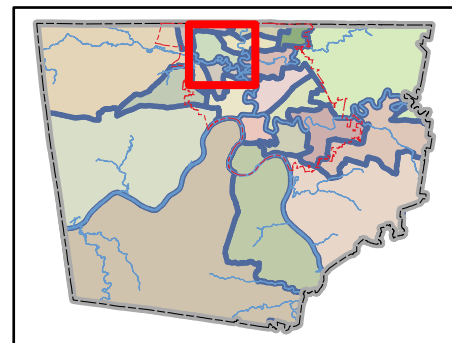
Montgomery County Commission Districts

District 12

Commissioner Carmelle Chandler



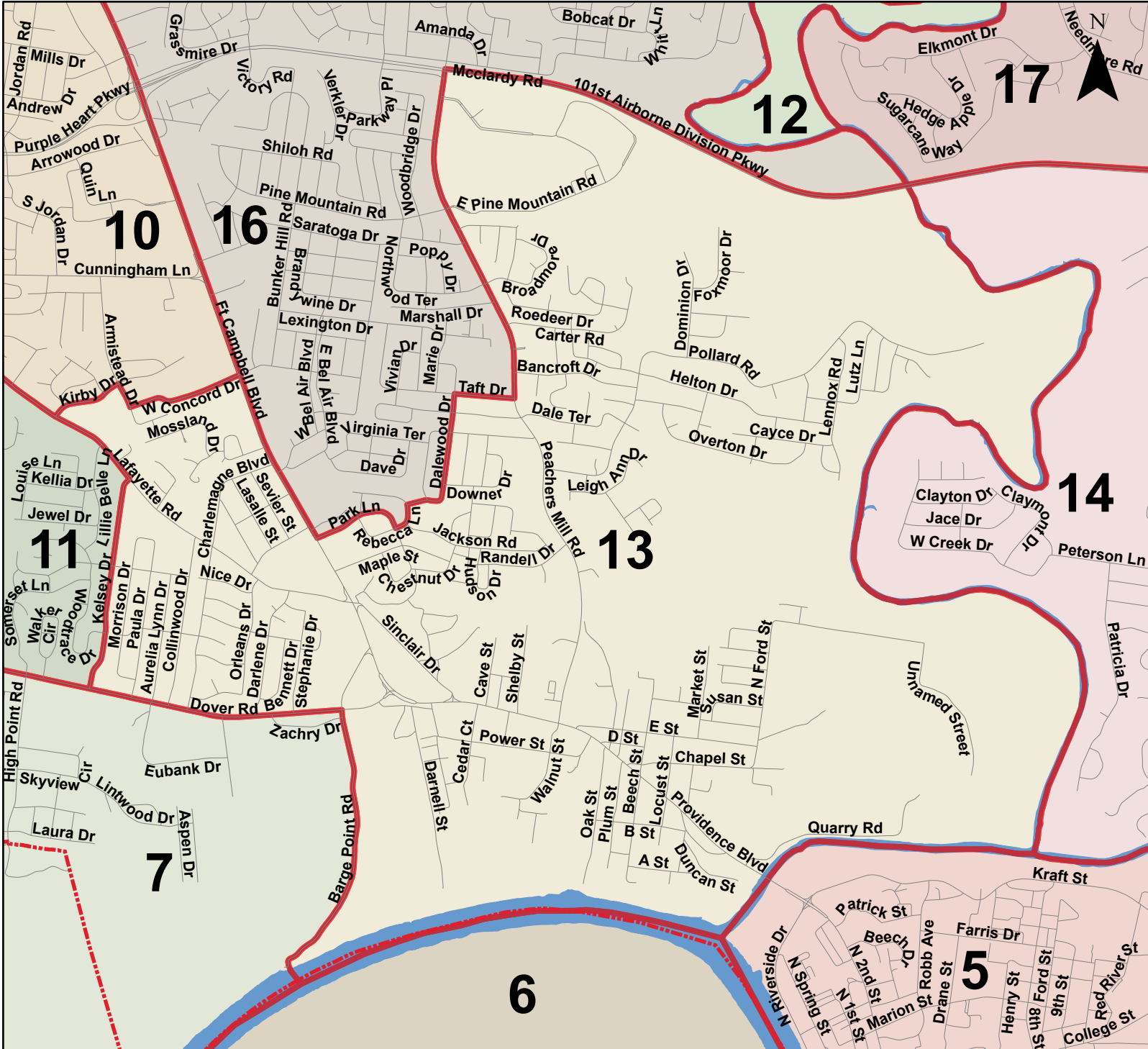
- | | | | | |
|--------------------|-----------------------|-------------------------|-------------------------|---------------------|
| Clarksville | Interstate | 4 - Rickey Ray | 10 - Jeremiah Walker | 16 - Lisa Prichard |
| Highway | Rivers | 5 - Rashida A. Leverett | 11 - Joe Creek | 17 - Chris Rasnic |
| 1 - John M. Gannon | 2 - Jason Knight | 6 - Clayton Rudder | 12 - Carmelle Chandler | 18 - Ryan Gallant |
| 3 - Joe Smith | 7 - Nathan Burkholder | 8 - Tangi C. Smith | 13 - Walker R. Woodruff | 19 - Billy Frye |
| | | 9 - Jorge Padro | 14 - Joshua Beal | 20 - Autumn Simmons |
| | | | 15 - David Harper | 21 - David Shelton |



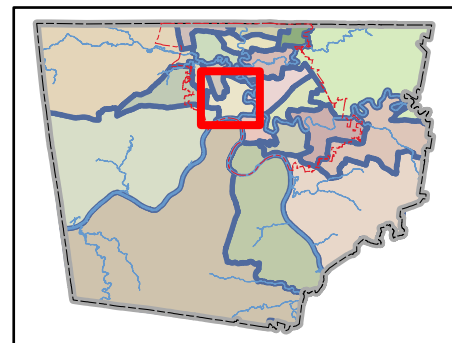
Montgomery County Commission Districts

District 13

Commissioner Walker R. Woodruff



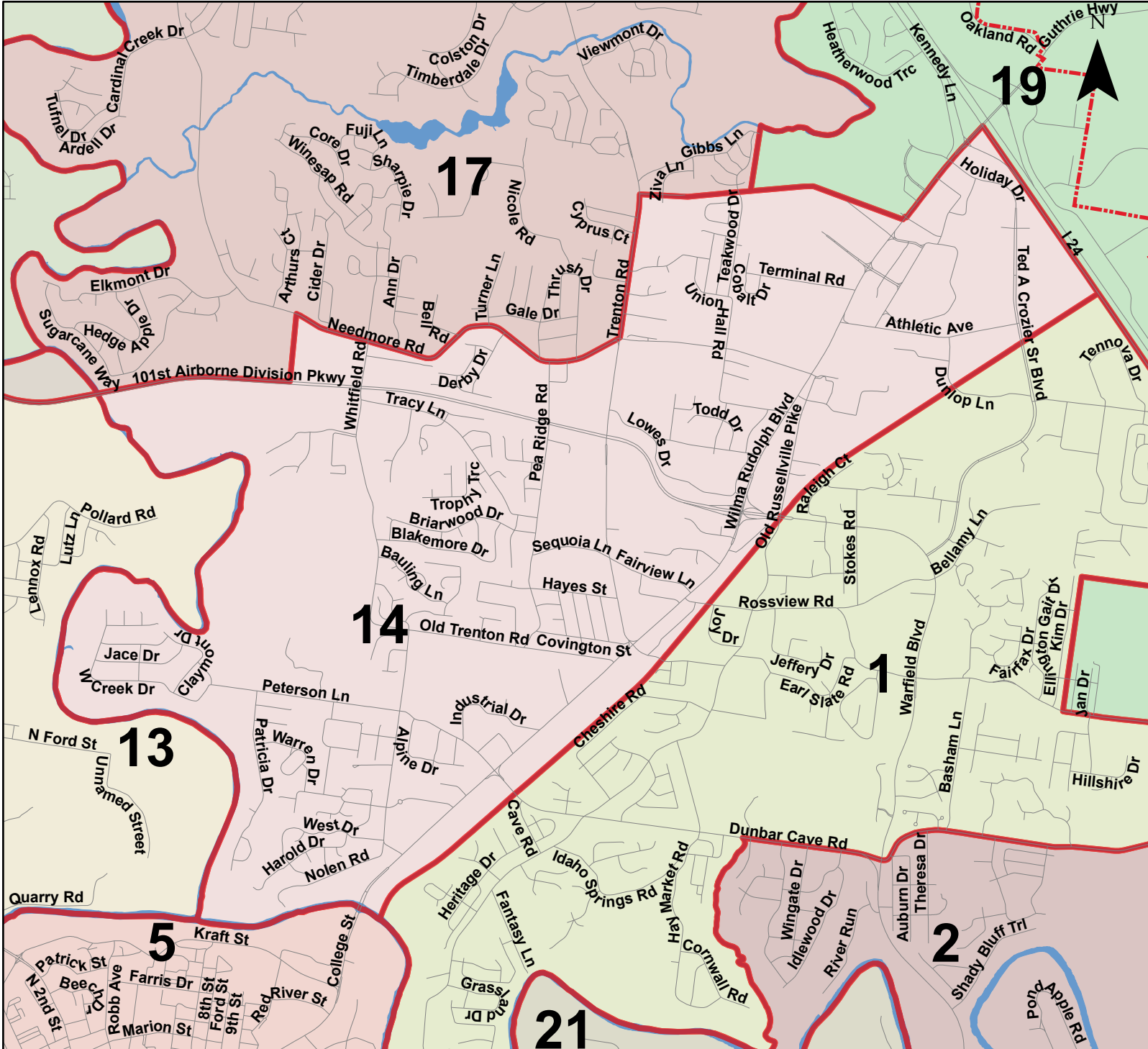
- | | | | | |
|--------------------|-----------------------|-------------------------|----------------------|--------------------|
| Clarksville | Interstate | 4 - Rickey Ray | 10 - Jeremiah Walker | 16 - Lisa Prichard |
| Highway | Rivers | 5 - Rashida A. Leverett | 11 - Joe Creek | 17 - Chris Ransic |
| 1 - John M. Gannon | 7 - Nathan Burkholder | 12 - Carmelle Chandler | 18 - Ryan Gallant | 19 - Billy Frye |
| 2 - Jason Knight | 8 - Tangi C. Smith | 13 - Walker R. Woodruff | 20 - Autumn Simmons | 21 - David Shelton |
| 3 - Joe Smith | 9 - Jorge Padro | 14 - Joshua Beal | | |



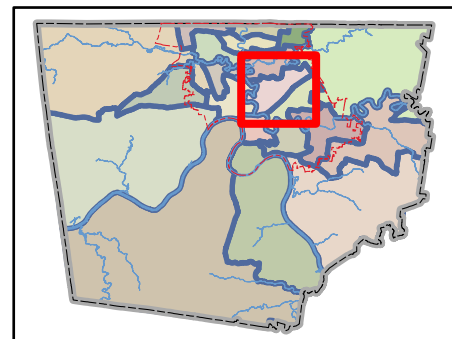
Montgomery County Commission Districts

District 14

Commissioner Joshua Beal



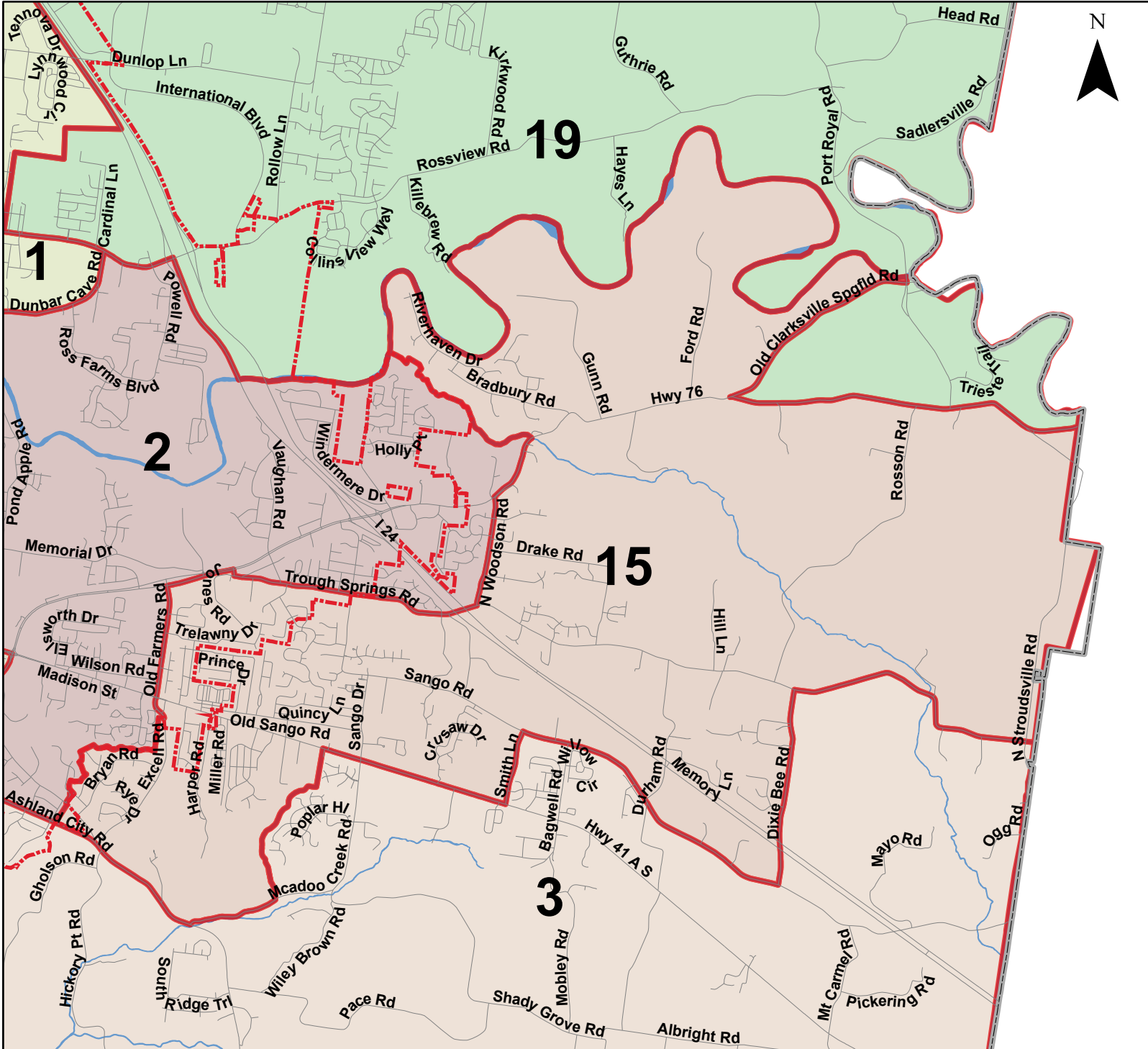
- | | | | | |
|--------------------|-----------------------|-------------------------|-------------------------|--------------------|
| Clarksville | Interstate | 4 - Rickey Ray | 10 - Jeremiah Walker | 16 - Lisa Prichard |
| Highway | Rivers | 5 - Rashida A. Leverett | 11 - Joe Creek | 17 - Chris Ransic |
| 1 - John M. Gannon | 2 - Jason Knight | 6 - Clayton Rudder | 12 - Carmelle Chandler | 18 - Ryan Gallant |
| 3 - Joe Smith | 7 - Nathan Burkholder | 8 - Tangi C. Smith | 13 - Walker R. Woodruff | 19 - Billy Frye |
| 9 - Jorge Padro | 14 - Joshua Beal | 15 - David Harper | 20 - Autumn Simmons | 21 - David Shelton |



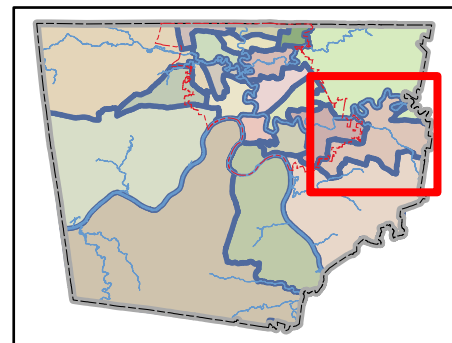
Montgomery County Commission Districts

District 15

Commissioner David Harper



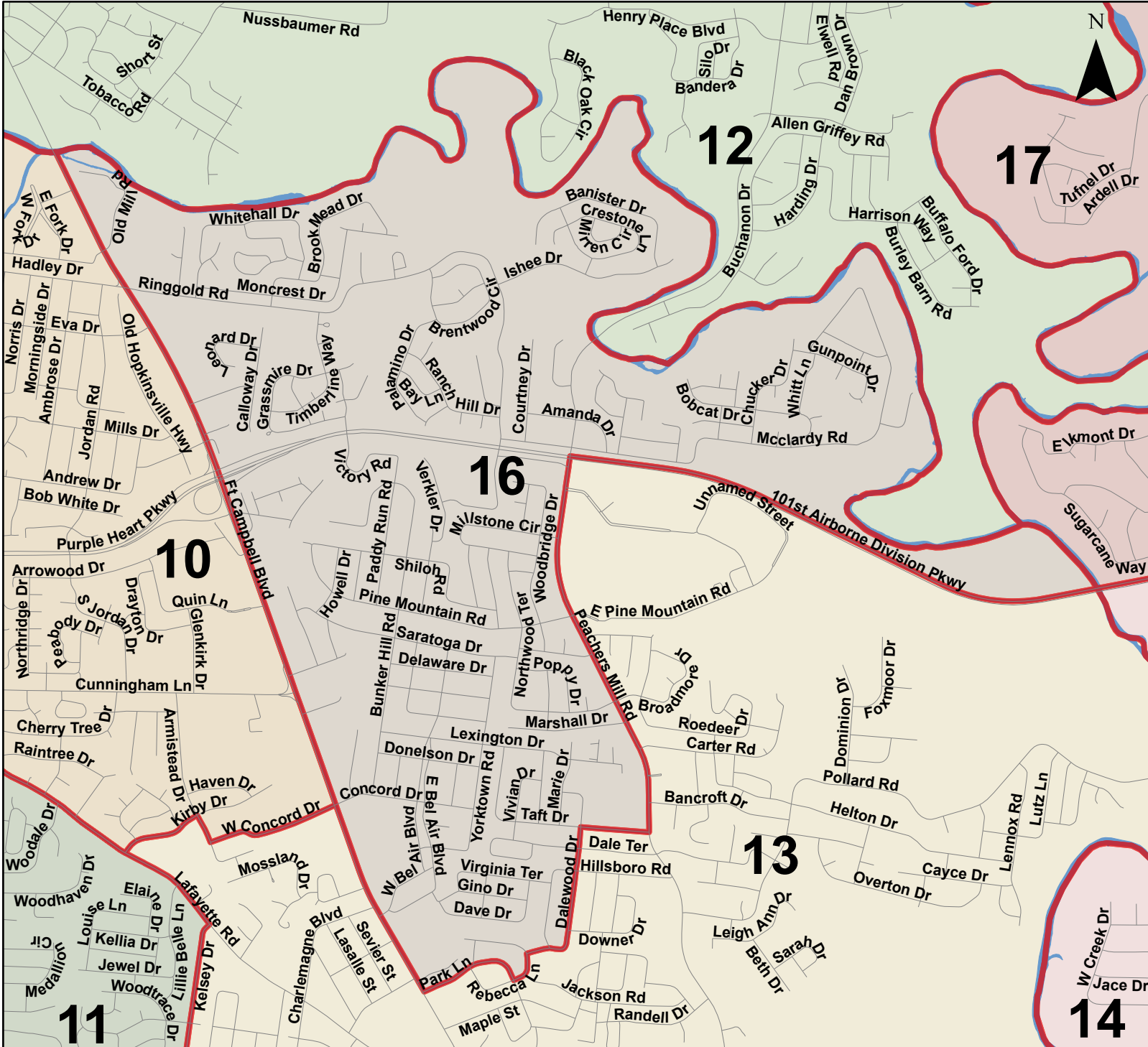
- | | | | | |
|--------------------|-----------------------|-------------------------|------------------------|---------------------|
| Clarksville | Interstate | 4 - Rickey Ray | 10 - Jeremiah Walker | 16 - Lisa Prichard |
| Highway | Rivers | 5 - Rashida A. Leverett | 11 - Joe Creek | 17 - Chris Ransic |
| 1 - John M. Gannon | 7 - Nathan Burkholder | 6 - Clayton Rudder | 12 - Carmelle Chandler | 18 - Ryan Gallant |
| 2 - Jason Knight | 8 - Tangi C. Smith | 13 - Walker R. Woodruff | 19 - Billy Frye | 20 - Autumn Simmons |
| 3 - Joe Smith | 9 - Jorge Padro | 14 - Joshua Beal | 15 - David Harper | 21 - David Shelton |



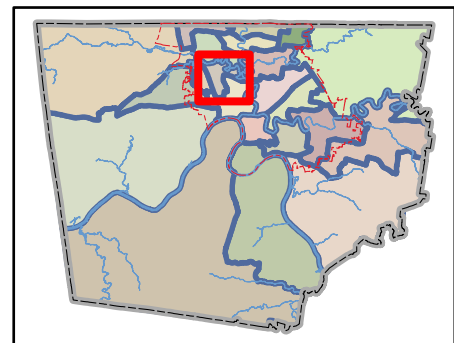
Montgomery County Commission Districts

District 16

Commissioner Lisa Prichard



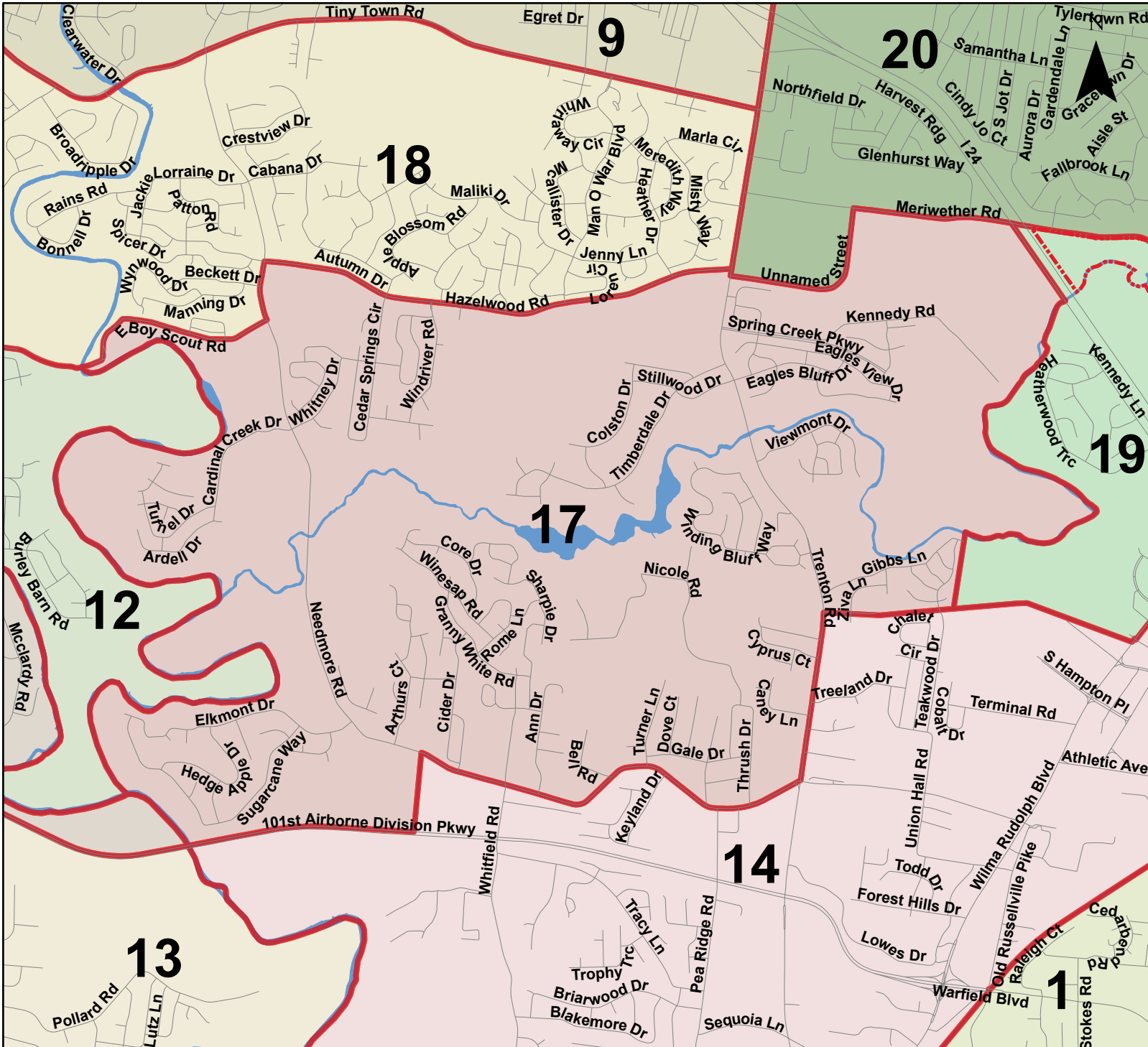
- | | | | | |
|--------------------|-----------------------|-------------------------|------------------------|---------------------|
| Clarksville | Interstate | 4 - Rickey Ray | 10 - Jeremiah Walker | 16 - Lisa Prichard |
| Highway | Rivers | 5 - Rashida A. Leverett | 11 - Joe Creek | 17 - Chris Ransic |
| 1 - John M. Gannon | 7 - Nathan Burkholder | 6 - Clayton Rudder | 12 - Carmelle Chandler | 18 - Ryan Gallant |
| 2 - Jason Knight | 8 - Tangi C. Smith | 13 - Walker R. Woodruff | 19 - Billy Frye | 20 - Autumn Simmons |
| 3 - Joe Smith | 9 - Jorge Padro | 14 - Joshua Beal | 21 - David Shelton | |



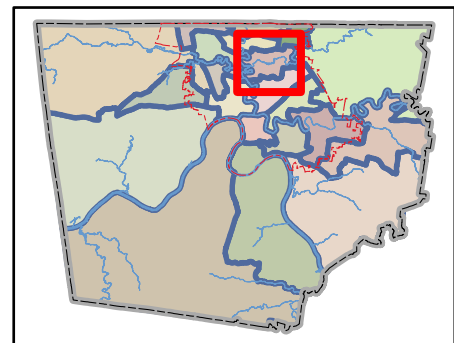
Montgomery County Commission Districts

District 17

Commissioner Chris Rasnica



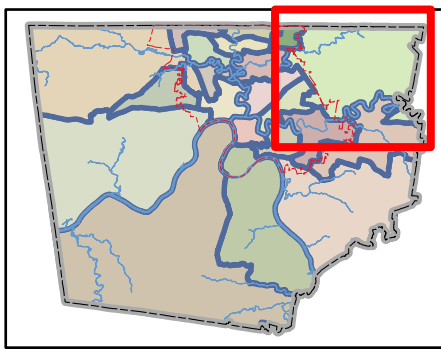
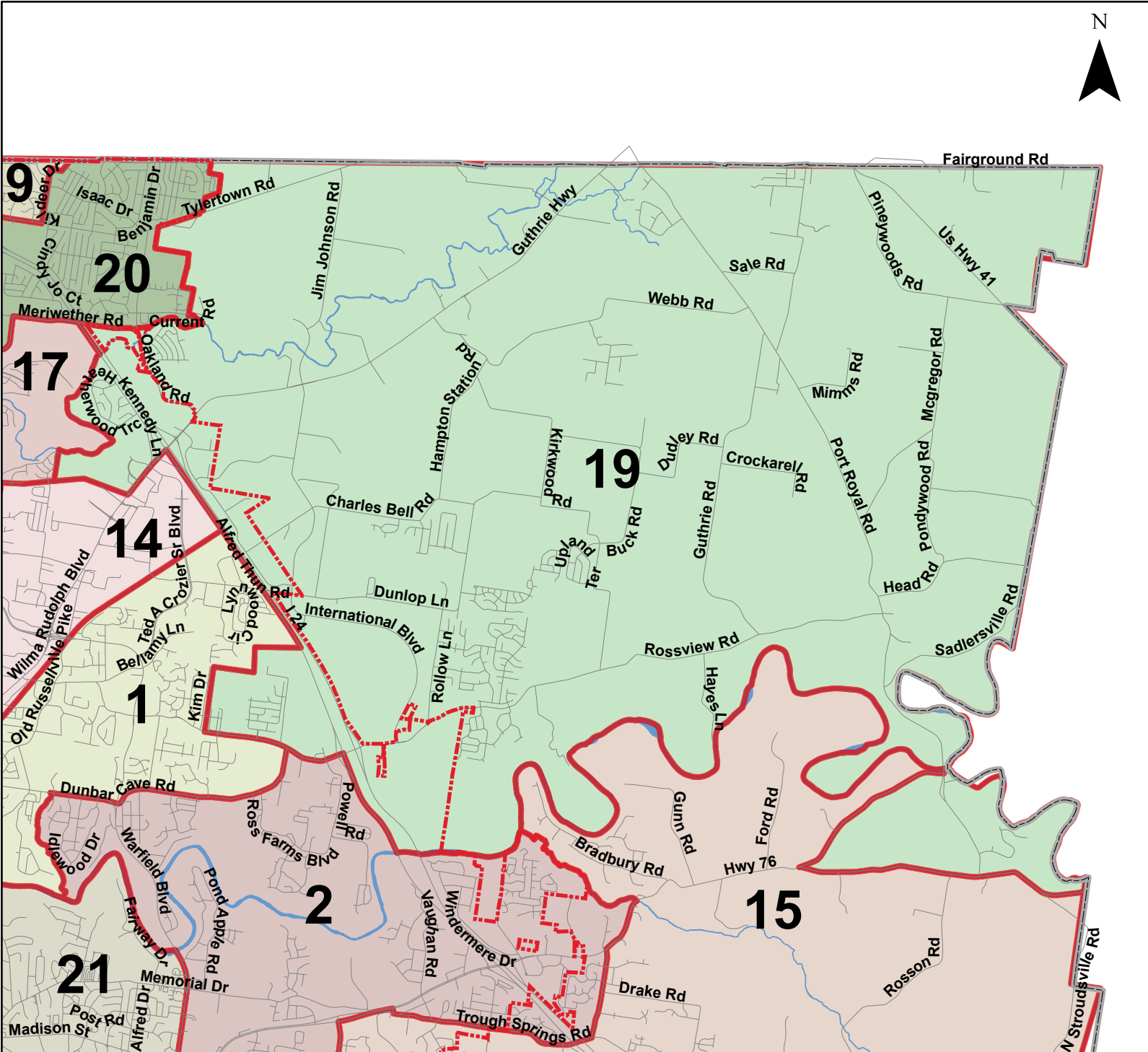
- | | | | | |
|--------------------|-----------------------|-------------------------|------------------------|---------------------|
| Clarksville | Interstate | 4 - Rickey Ray | 10 - Jeremiah Walker | 16 - Lisa Prichard |
| Highway | Rivers | 5 - Rashida A. Leverett | 11 - Joe Creek | 17 - Chris Rasnica |
| 1 - John M. Gannon | 7 - Nathan Burkholder | 6 - Clayton Rudder | 12 - Carmelle Chandler | 18 - Ryan Gallant |
| 2 - Jason Knight | 8 - Tangi C. Smith | 13 - Walker R. Woodruff | 19 - Billy Frye | 20 - Autumn Simmons |
| 3 - Joe Smith | 9 - Jorge Padro | 15 - David Harper | 21 - David Shelton | |



Montgomery County Commission Districts

District 19

Commissioner Billy Frye



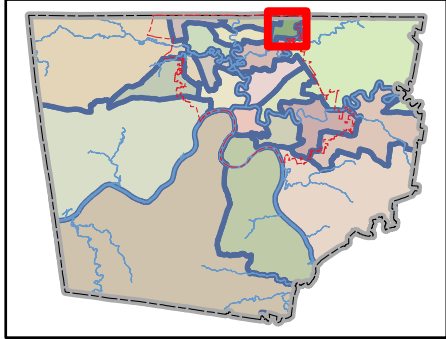
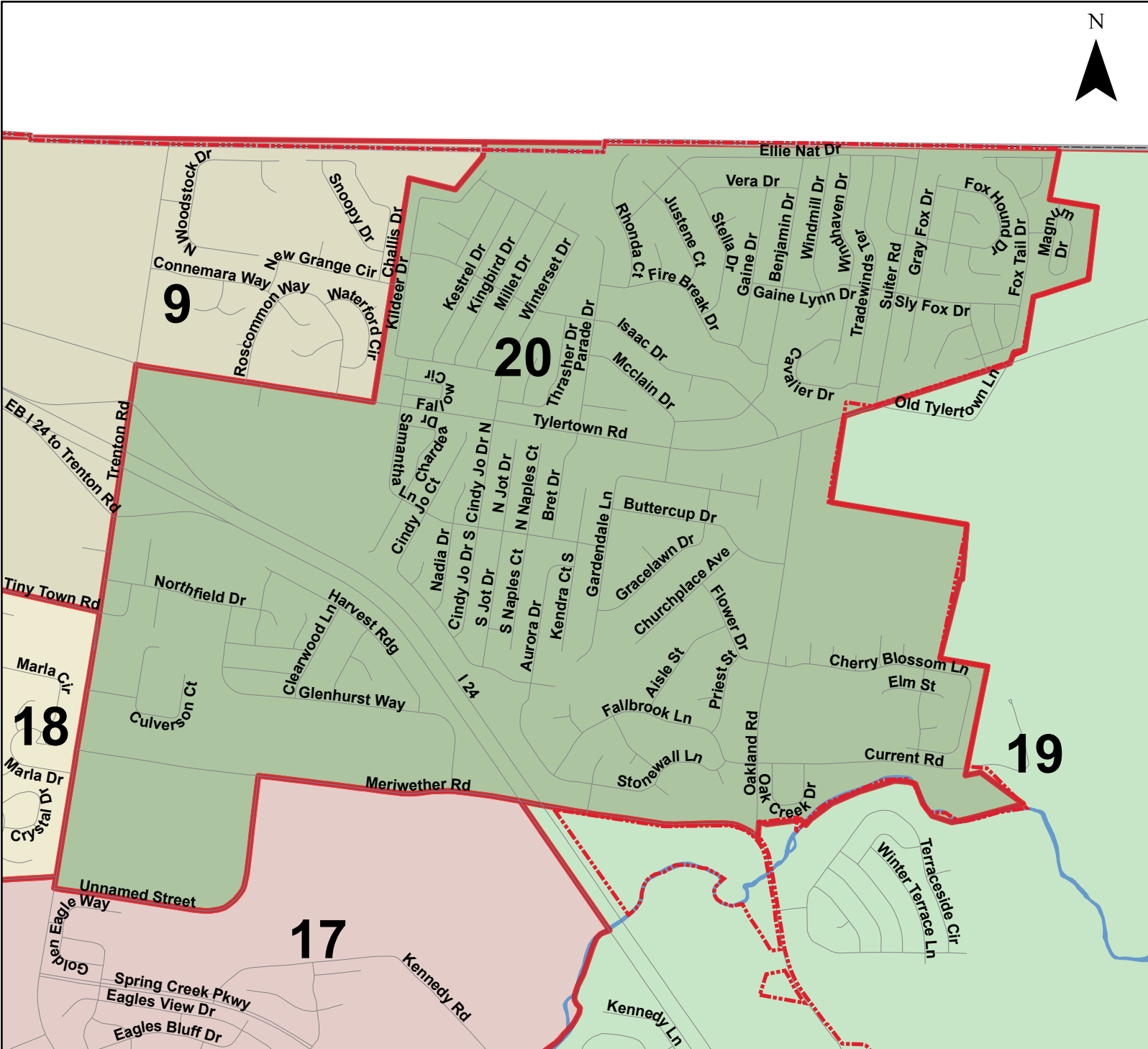
- | | | | | |
|--------------------|-----------------------|-------------------------|-------------------------|---------------------|
| Clarksville | Interstate | 4 - Rickey Ray | 10 - Jeremiah Walker | 16 - Lisa Prichard |
| Highway | Rivers | 5 - Rashida A. Leverett | 11 - Joe Creek | 17 - Chris Rasnic |
| 1 - John M. Gannon | 2 - Jason Knight | 6 - Clayton Rudder | 12 - Carmelle Chandler | 18 - Ryan Gallant |
| 3 - Joe Smith | 7 - Nathan Burkholder | 8 - Tangi C. Smith | 13 - Walker R. Woodruff | 19 - Billy Frye |
| | 9 - Jorge Padro | 14 - Joshua Beal | 15 - David Harper | 20 - Autumn Simmons |
| | | | | 21 - David Shelton |

Montgomery County Commission Districts

District 20

Commissioner Autumn Simmons

N

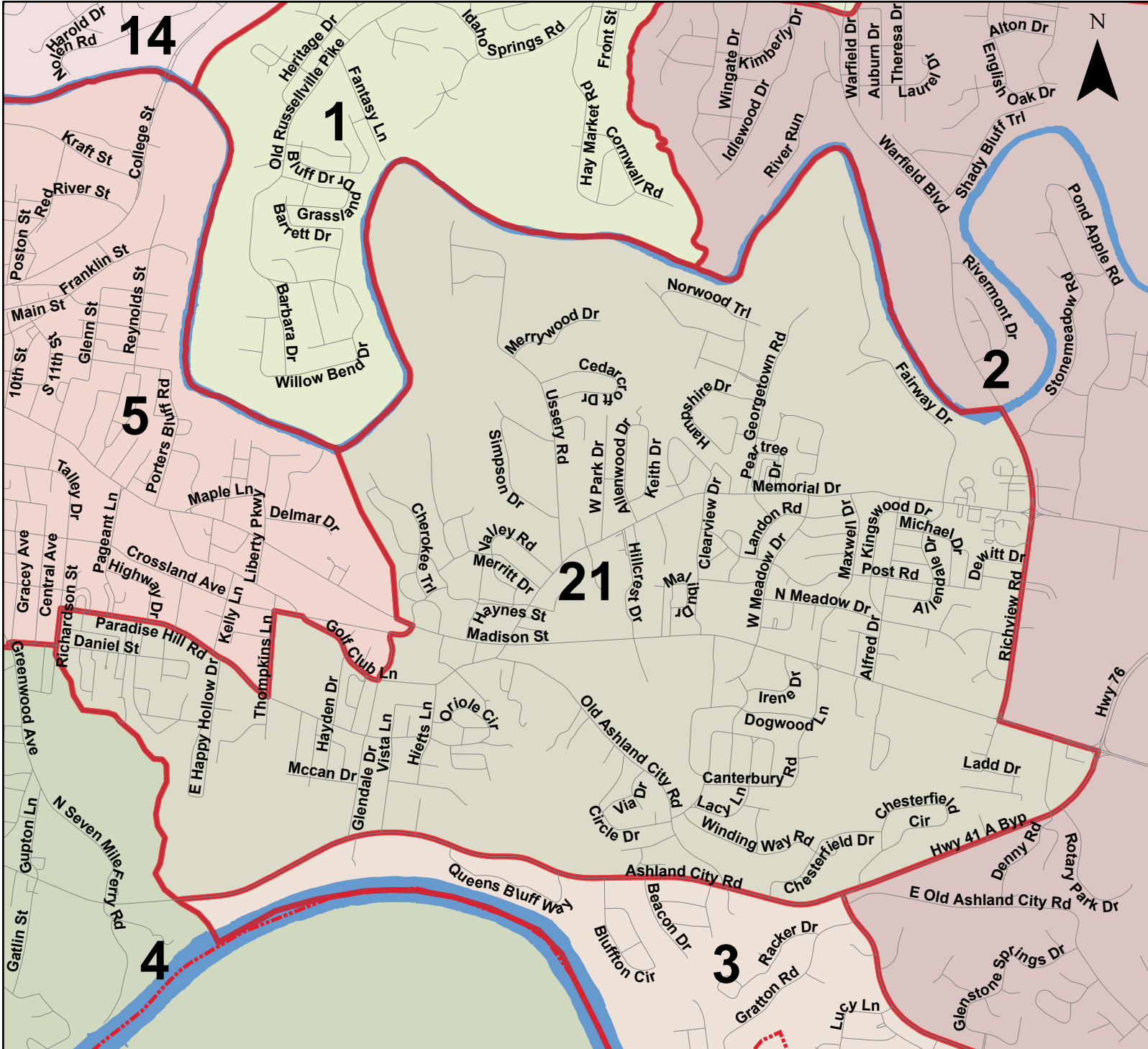


- | | | | | |
|--------------------|-----------------------|-------------------------|-------------------------|--------------------|
| Clarksville | Interstate | 4 - Rickey Ray | 10 - Jeremiah Walker | 16 - Lisa Prichard |
| Highway | Rivers | 5 - Rashida A. Leverett | 11 - Joe Creek | 17 - Chris Rasnic |
| 1 - John M. Gannon | 2 - Jason Knight | 6 - Clayton Rudder | 12 - Carmelle Chandler | 18 - Ryan Gallant |
| 3 - Joe Smith | 7 - Nathan Burkholder | 8 - Tangi C. Smith | 13 - Walker R. Woodruff | 19 - Billy Frye |
| 9 - Jorge Padro | 14 - Joshua Beal | 15 - David Harper | 20 - Autumn Simmons | 21 - David Shelton |

Montgomery County Commission Districts

District 21

Commissioner David Shelton



- | | | | | |
|--------------------|-----------------------|-------------------------|----------------------|--------------------|
| Clarksville | Interstate | 4 - Rickey Ray | 10 - Jeremiah Walker | 16 - Lisa Prichard |
| Highway | Rivers | 5 - Rashida A. Leverett | 11 - Joe Creek | 17 - Chris Ransic |
| 1 - John M. Gannon | 7 - Nathan Burkholder | 12 - Carmelle Chandler | 18 - Ryan Gallant | 19 - Billy Frye |
| 2 - Jason Knight | 8 - Tangi C. Smith | 13 - Walker R. Woodruff | 20 - Autumn Simmons | 21 - David Shelton |
| 3 - Joe Smith | 9 - Jorge Padro | 14 - Joshua Beal | | |

